

## TECHNICAL INFO Nr. 55

28 April 2014

Dear Customer,

in the restricted area of Landi Renzo website is available the new SW Omegas, release 3.1.0 which is joining at the moment the actual 2.16.9 version and it will replace this in the close future.

The new SW release 3.1.0 introduces new functionality which not allow the use of the SW to not authorized users and protects officials LR workshops.

After installing of the new SW each user must register the SW (proper procedure to register the SW in reported here below, its needed to have internet connection).

In the case internet connection is not available user can follow the alternative procedure with short code, contacting his dealer who will requests to Landi Renzo the unlock code).

All the new features introduced with the new SW will require to reprogram the ECU with the latest FW released with the SW itself.

Newest FW included in the SW release:

OMEGAS 3-4 cyl:	<b><i>LRE194_#00440.plr</i></b>
OMEGAS 5-6-8 cyl:	<b><i>LRE198_#00540.pln</i></b>
OMEGAS EVO:	<b><i>EVO_#00950.ple</i></b>
OMEGAS3:	<b><i>OM3_#00590.ple</i></b>

**To be noted: Once reprogrammed the ECU with the latest FW will not be longer possible to connect to the ECU with the 2.16.9 and older SW**

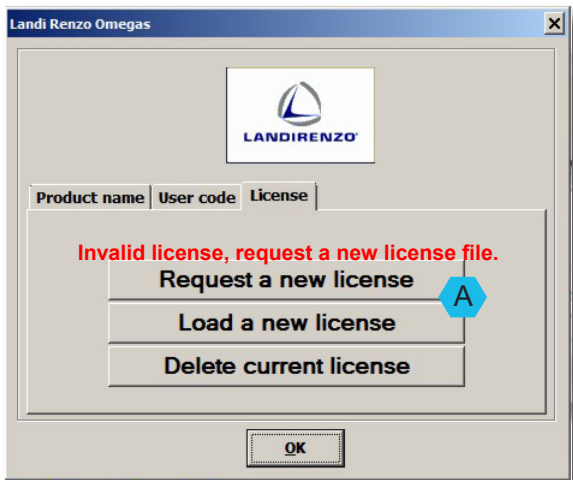
### New Functionality introduced:

- Valid License is required to open the SW.  
License must be required via internet registering the SW, or via e-mail (only registered users).
- Connection and tuning of new "OMEGAS3" system
- Possibility to activate service reminder functionality (OMEGAS3; EVO)
- Possibility to diagnostic functionality of EVs and Switch in the page "Diagnosis" (OMEGAS3; EVO)
- Introduced possibility of select "LANDI EVO" e "LOVATO J" injectors (OMEGAS; OMEGAS3; EVO)
- Introduced possibility to take rpm by injection pulses (OMEGAS, OMEGAS3; EVO)
- Introduced possibility to get rpm connecting brown wire to the cam sensor signal (OMEGAS, OMEGAS3; EVO)

- Introduced possibility to increase EVs opening advance (OMEGAS3; EVO)
- Introduced possibility to set EV1 opening advance time (OMEGAS3; EVO)
- Introduced possibility to set EV2 opening time (OMEGAS3)
- Introduced possibility to manage STAP using EV2 wire (OMEGAS3)
- Introduced K-factor self adjustment for injectors LANDI, LANDI 2.0 e LANDI-EVO (OMEGAS3; EVO)
- Introduced strategy "increase max current at change over" (OMEGAS; OMEGAS3; EVO)  
The strategy improves the first change over to gas in case of injectors partially stuck from moistures in the technical functionality limit
- Introduced possibility to enable/disable injectors warming up and set gas pressure threshold to inhibit. (OMEGAS; OMEGAS3; EVO; EVOL)  
Strategy inhibits warming up over a pressure threshold
- Introduced possibility to set pressure threshold for enabling pressure discharge in cut off (OMEGAS; OMEGAS3; EVO; EVOL)  
The strategy already present for LPG can be now enabled and disable and thresholds can be set.

Complete manuals of the new SW will be soon available.

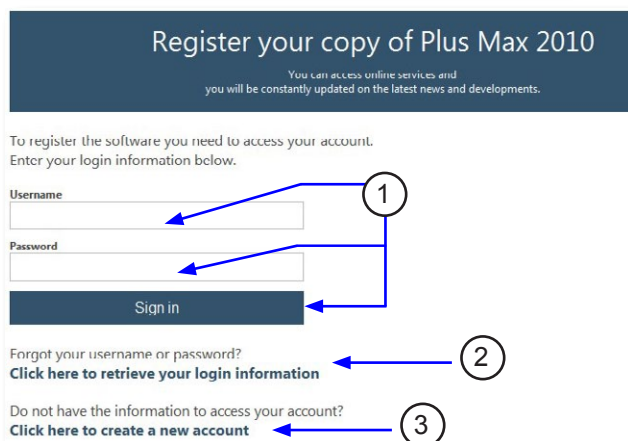
### 3 COSTUMER REGISTRATION AND LOADING OF THE LICENSE



To use the program you must be registered. The PC on which you installed the program needs INTERNET connection for registering.

To register, the first time you open the program, the PC opens the registration window. Select "Request a new license." **A**

PC automatically connects to the Internet page: [www.serviapplications.net/](http://www.serviapplications.net/) .....

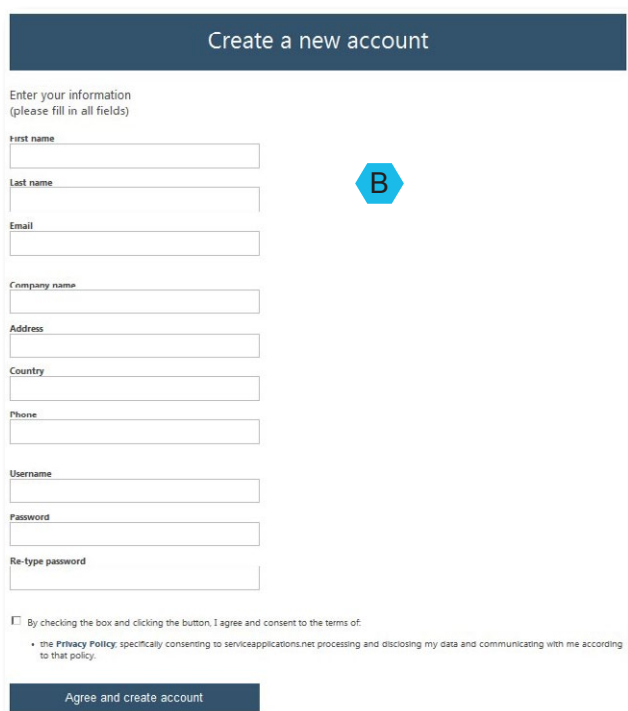


For customers already registered, type only:

- Name;
- Password;
- Press "Sign in" (ref. **1**).

In case you do not remember your password, you can retrieve it by clicking on the text with reference **2**.

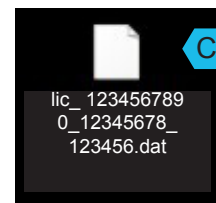
If the customers aren't registered, will have to create a new account by going to the next page, (ref. **3**).

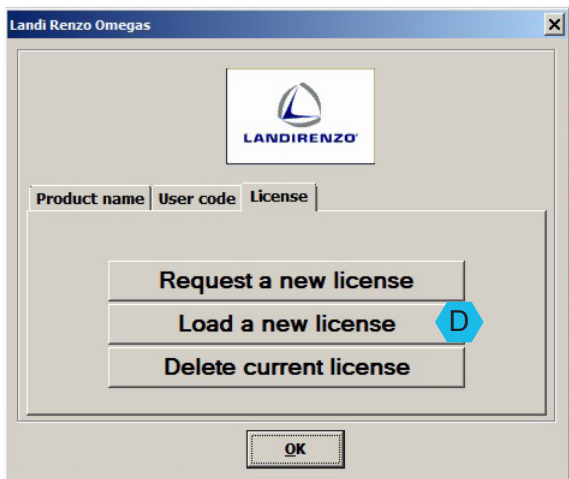


Fill all the field **B** and press "Confirm".

In short time (depending on the speed of your Internet connection) you will receive an e-mail asking you to confirm the registration to the e-mail address (that you have indicated above).

Replying to e-mail, you will receive a second e-mail with your license file **C**.





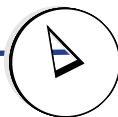
After use, we recommend saving the license in your PC by following the path: Program Files \ Landi Renzo \ Landi Renzo Omegas.

Return to the program SW LANDI RENZO OMEGAS.

Click on "Load a new license" **D**. Select the file "license" following the path where you have stored the license.

After upload the license, the PC, confirming, asks to shut down and restart the program LANDI RENZO OMEGAS

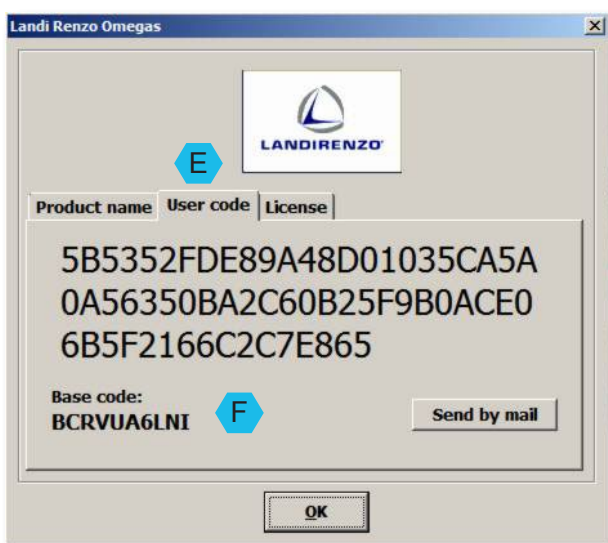
**1**



#### NOTE

During the installation, the SW generates a user code with alphanumeric sequence different for each PC on which it is installed.

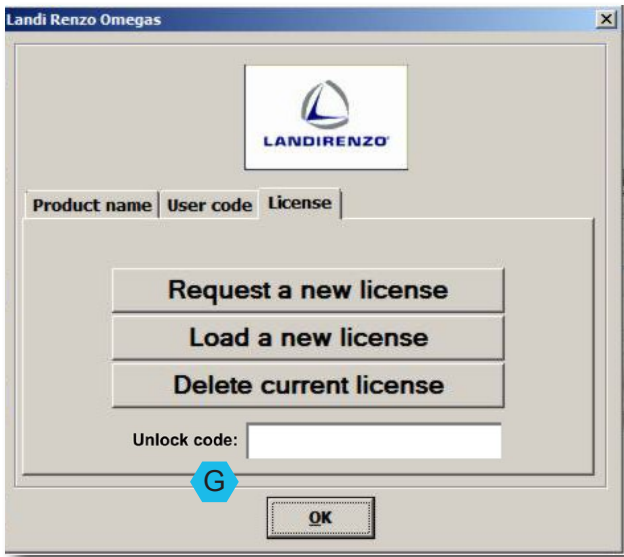
You can not use the same "license" for two different PCs.



Alternatively, if you receive the message "computer already registered," it will be possible by opening the page **E** "User code", press the button "Send by e-mail." Send the e-mail.

The user will receive an email back with the license file (see reference **C**), the license, will have to be loaded on the PC specific.

In exceptional cases, users who do not have the ability to connect the PC to Internet, is provided an unlock code "Base code" **F** which will be notified by phone / e-mail. "



The return code must be loaded in: "License" - "Unlock code" **G**.

Note - This alternative will allow you to see the basic program and only for a limited period.