

# GOK

# LPG



Components · Solutions · Systems

FOR **EUROPEAN**  
**LPG INSTALLATIONS**

ONLY **BEST QUALITY**

FOR YOUR **ABSOLUTE SAFETY**



*Caravan*



*Camping*



*Marine Line*

Made in GERMANY

# Foreword

GOK offer a complete and continuous product range for liquefied and gaseous energy.

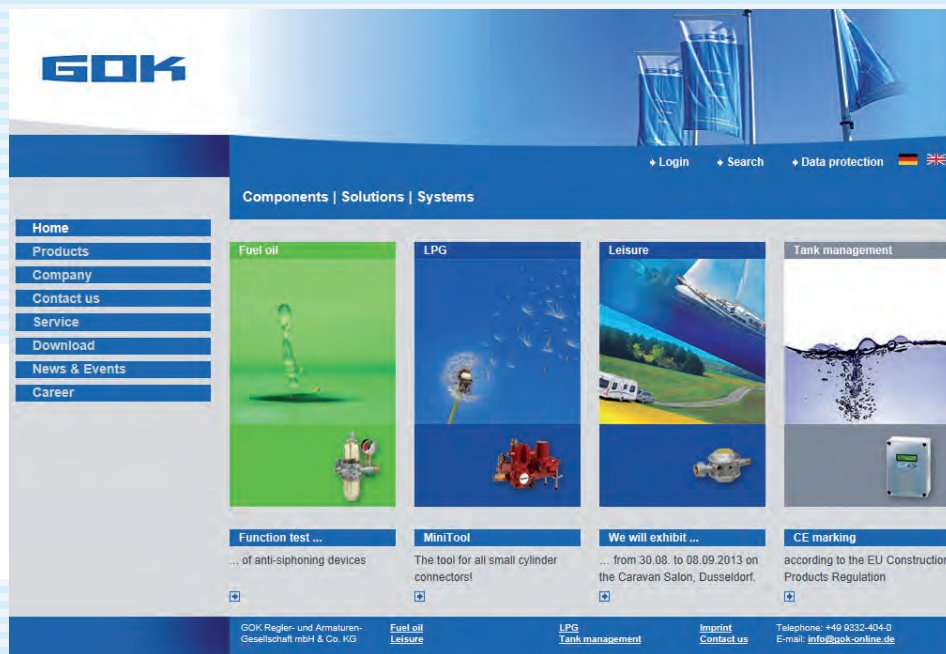
To support you in selecting the right product, our sales documents show:

- Large number of new products in all sectors
- Self-explaining use and application descriptions
- Information on the individual products concerning application areas, product benefits, features and technology
- Optimised product tables for quick product selection and improved price overview

The GOK picture price lists are only available in German language, product catalogues in different languages.

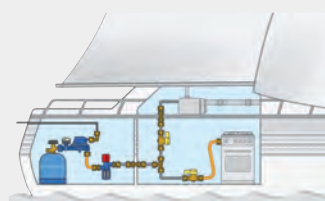
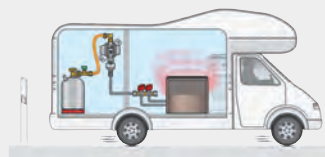
In addition to our catalogues, you will find a lot of useful information, a comprehensive download section, event notes, news, technical standards and background information on specific issues on our website [www.gok-online.de](http://www.gok-online.de). Just have a look!

We trust that you will find all relevant information when going through our catalogue or website.



By the way: You can also download our catalogues and picture price lists from our website or ask for hardcopies by sending an e-mail to: [information@gok-online.de](mailto:information@gok-online.de)

# Contents



Areas of application	2 - 3
Motor caravan - Heating while driving	4 - 9
Caravan and motor caravan	10 - 31
Camping	32 - 43
Marine	44 - 54
Pipe system	55 - 73
Accessories	74 - 75
Connections	76 - 80
Article list (ascending by article numbers)	81 - 83
Short descriptions and units	84
Index	85

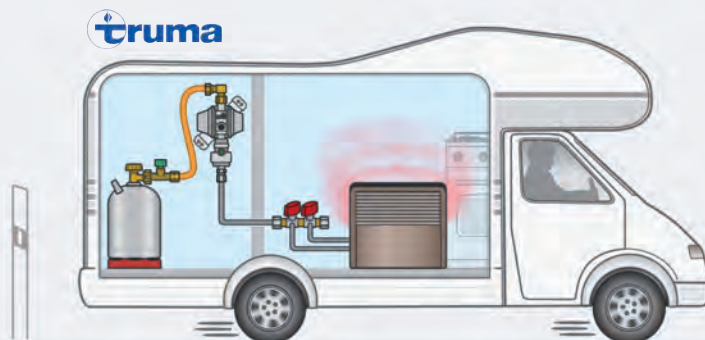
## Areas of application



### Motor caravan - Heating while driving

If the gas heating on board is intended to heat the vehicle while it is travelling, special safety equipment must be installed.

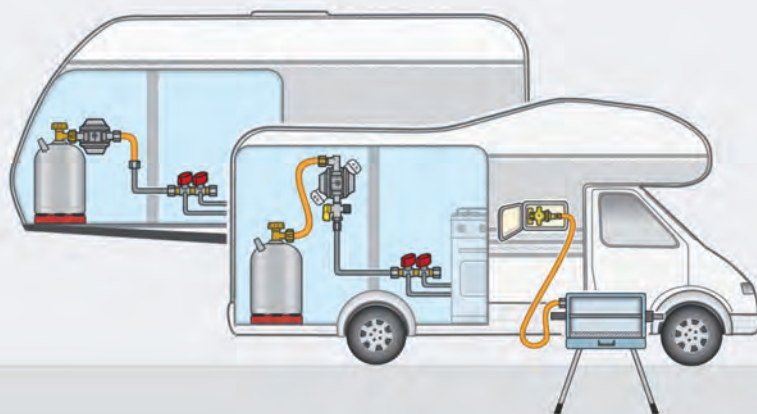
from page 4



### Caravan and motor caravan

The tried and tested connection solutions for caravans and motor caravans.

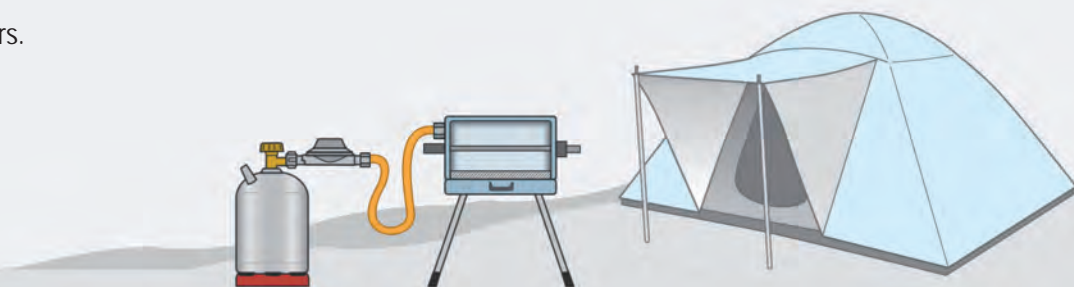
from page 10



### Camping

Small cylinder systems for outdoors.

from page 32



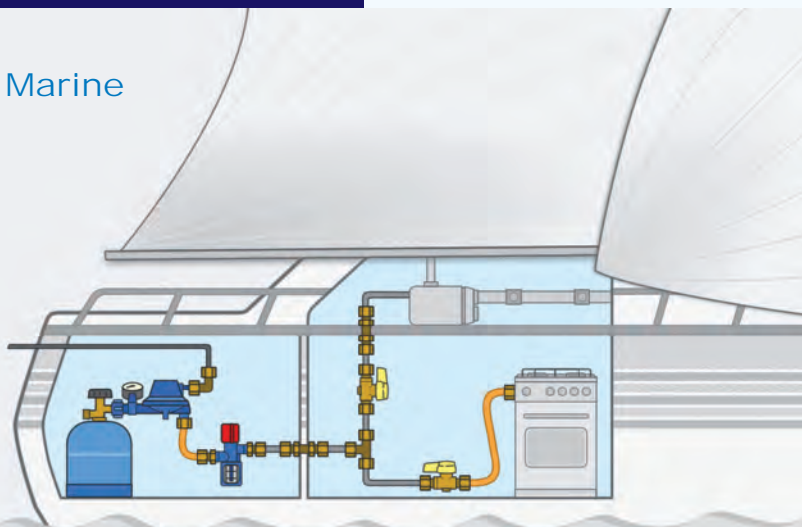
# Areas of application



## Marine

LPG systems on boats

from page 44



## Pipe system and accessories

Pipe system

from page 55

Accessories

from page 74

## Articles in promotional packaging with Euro slots

We help you increase sales. With our promotional packaging with Euro slots for your showroom.

Look for this sign: 

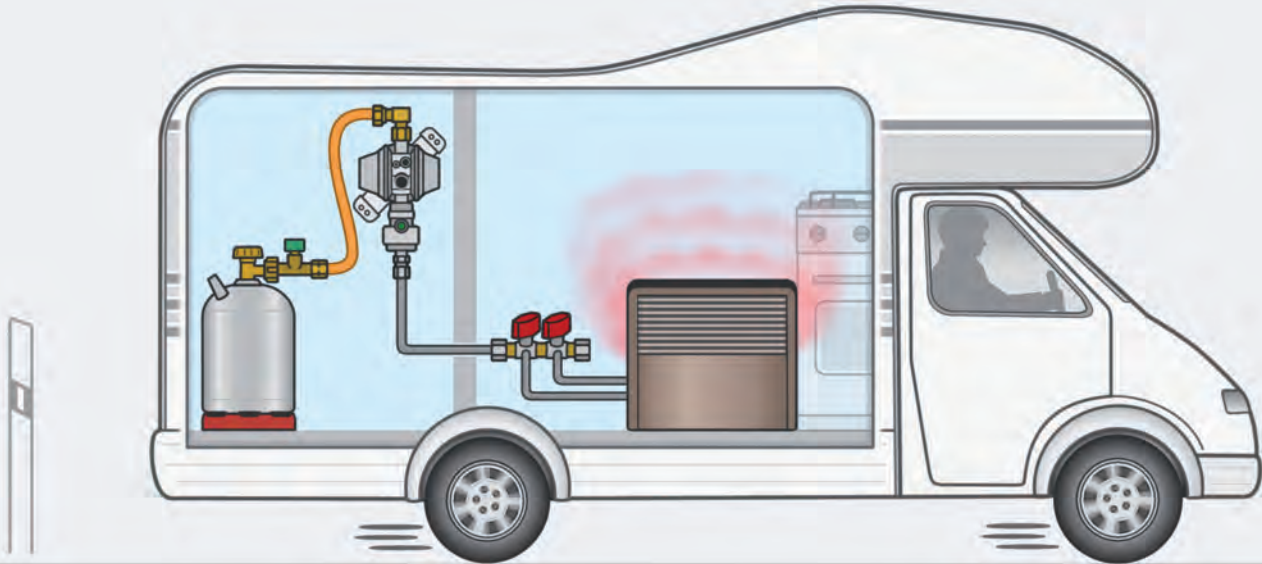
Depending on size and shape, these products are either welded onto a GOK skin card or packaged in a plastic bag with GOK header.



All common European regulator connections are available.  
Please ask us if you do not find what you are looking for.



# Heating while driving



## Motor caravan - Heating while driving

If the gas heating on board is intended to heat the vehicle while it is travelling, special safety equipment must be installed to prevent gas escaping in the event of an accident.

The LPG installation is monitored continuously with the combination of an excess flow device for the high pressure hose and a mechanical crash sensor for the piping.

The connection to the gas cylinder is made with the suitable country-specific excess flow device and a high pressure hose without the low pressure regulator having to be replaced.



### DuoControl CS PS 16 bar

safety gas pressure control system with automatic changeover valve for safe operation of two-cylinder systems in caravans and motor caravans while travelling

consisting of: automatic changeover valve, low pressure regulator with safety pressure relief valve PRV, wall bracket, test connector and mechanical crash sensor

#### Advantages and equipment

- especially suitable for retrofitting older vehicles
- heating while driving through the integrated mechanical crash sensor, which blocks the gas flow in the event of an accident with deceleration of  $3.5\text{ G} \pm 0.5\text{ G}$  directly affecting the trigger element
- automatic changeover from empty to full spare cylinder
- can be used throughout Europe through the use of country-specific high pressure hoses
- cylinders can be replaced without interrupting operation
- gas backflow prevention device: prevents gas flowing back when the cylinder is replaced
- integrated operation and spare display (green/red)
- design with compression fitting 10 as outlet connector, equipped with an adapter for connection to 8 mm piping

#### Approval

- EC type test according to PED and Heater Directive

#### DuoControl CS

##### vertical installation

2 x M20 x 1.5 M	x	compr. fit. 10 / 8	30 mbar	1.5 kg/h	51610-01	11 591 00
2 x M20 x 1.5 M	x	compr. fit. 8	50 mbar	1.5 kg/h	51610-02	11 591 02

##### horizontal installation

2 x M20 x 1.5 M	x	compr. fit. 10 / 8	30 mbar	1.5 kg/h	51620-01	11 591 01
2 x M20 x 1.5 M	x	compr. fit. 8	50 mbar	1.5 kg/h	51620-02	11 591 03

#### Accessories

Remote display DuoC with integrated de-icer and cable harness 6 m	50210-01	11 499 00
Surface-mounted frame for remote display	40000-52600	11 499 05
De-icer 12 V	53101-01	11 499 02
Gas remote switch GS 8 mm for one and two-cylinder systems	57013-01	10 076 10
Gas remote switch GS 10 mm for one and two-cylinder systems	57023-01	10 077 10
Elbow 90° M20 x 1.5 nut x M20 x 1.5 M		14 509 00
Gasket for M20 x 1.5 nut		04 590 25



vertical



horizontal



# Heating while driving



## MonoControl CS PS 16 bar

safety gas pressure control system for safe operation of single cylinder systems in caravans and motor homes while driving  
consisting of: low pressure regulator with overpressure safety device, wall bracket, test connector and mechanical crash sensor

### Advantages and equipment

- especially suitable for retrofitting older vehicles
- heating while driving through the integrated mechanical crash sensor, which blocks the gas flow in the event of an accident with deceleration of  $3.5 \text{ G} \pm 0.5 \text{ G}$  directly affecting the trigger element
- can be used throughout Europe through the use of country-specific high pressure hoses
- design with compression fitting 10 as outlet connector, equipped with an adapter for connection to 8 mm piping

### Approval

- EC type test according to PED and Heater Directive

### MonoControl CS vertical installation

M20 x 1.5 M	x	compr. fit. 10 / 8	30 mbar	1.5 kg/h	52410-01	11 491 00
M20 x 1.5 M	x	compr. fit. 8	50 mbar	1.5 kg/h	52410-02	11 491 02

### horizontal installation

M20 x 1.5 M	x	compr. fit. 10 / 8	30 mbar	1.5 kg/h	52420-01	11 491 01
M20 x 1.5 M	x	compr. fit. 8	50 mbar	1.5 kg/h	52420-02	11 491 03

### for gas tanks with 90° tank panel

Komb.A	x	compr. fit. 10	30 mbar	1.5 kg/h	52420-21	11 491 04
Komb.A	x	compr. fit. 8	50 mbar	1.5 kg/h	52420-22	11 491 05

### for gas tanks with 105° tank panel

GF	x	compr. fit. 10	30 mbar	1.5 kg/h	52420-31	11 491 06
----	---	----------------	---------	----------	----------	-----------

### Accessories

De-icer 12 V					53101-01	11 499 02
Gas remote switch GS 8 mm for one and two-cylinder systems					57013-01	10 076 10
Gas remote switch GS 10 mm for one and two-cylinder systems					57023-01	10 077 10
Elbow 90° M20 x 1.5 nut x M20 x 1.5 M						14 509 00
Gasket for M20 x 1.5 nut						04 590 25





### High pressure hose assembly with excess flow device

to connect the SecuMotion or MonoControl CS regulator or the DuoControl or DuoComfort changeover systems to the gas cylinder valve

#### Advantages and equipment

- heating while driving
- can be used throughout Europe through the use of high pressure hoses with country-specific connections
- excess flow device prevents gas escaping in case of damage or if the hose becomes loose and blocks the gas flow as soon as the nominal flow is exceeded by 10%
- manual excess flow device:  
no delay or specified leak volume, but it must be opened manually

#### Approval

- EC type test according to PED and Heater Directive

#### Technical data

- hose assembly: **rubber with textile lining**
- cold-resistant to -30°C

#### Note

- The 750 mm long hose may be used only for cylinder mountings with a slide-out mechanism.

- 30 °C



### High pressure hose assembly with excess flow device PS 30 bar connections: cylinder connection x regulator connection for Germany

KLF (G.12)	x	M20 x 1.5 nut	x	450 mm	50410-01	11 494 01
KLF (G.12)	x	M20 x 1.5 nut	x	750 mm	50420-01	11 495 01

#### for the UK

British POL (G.7)	x	M20 x 1.5 nut	x	450 mm	50410-02	11 494 02
British POL (G.7)	x	M20 x 1.5 nut	x	750 mm	50420-02	11 495 02

#### for France

FR Shell (G.2)	x	M20 x 1.5 nut	x	450 mm	50410-03	11 494 03
FR Shell (G.2)	x	M20 x 1.5 nut	x	750 mm	50420-03	11 495 03

#### for Italy

Italian connector (G.1)	x	M20 x 1.5 nut	x	450 mm	50410-04	11 494 04
Italian connector (G.1)	x	M20 x 1.5 nut	x	750 mm	50420-04	11 495 04

#### for Sweden

soft POL (G.10)	x	M20 x 1.5 nut	x	450 mm	50410-05	11 494 05
soft POL (G.10)	x	M20 x 1.5 nut	x	750 mm	50420-05	11 495 05

#### for Europe

Euro Shell (G.8)	x	M20 x 1.5 nut	x	450 mm	50410-06	11 494 06
Euro Shell (G.8)	x	M20 x 1.5 nut	x	750 mm	50420-06	11 495 06

#### Accessories

Gasket for M20 x 1.5 nut						04 590 25
--------------------------	--	--	--	--	--	-----------



## Heating while driving



### Gas filter

prevents contamination in the LPG installation  
protects the pressure regulator or the automatic changeover valve against contamination from oily aerosols and evaporation residues

#### Advantages and equipment

- for all wall-mounted pressure regulators and automatic changeover valves
- higher separation degree of 99%
- integrated saturation display
- easy-to-replace filter cartridges

#### Gas filter

M20 x 1.5 M x M20 x 1.5 nut

50600-01

11 781 00

#### Accessories

Replacement cartridge

50680-01

11 781 20

Additional bracket

50020-18100

11 781 22

Elbow 90° M20 x 1.5 nut x M20 x 1.5 M

14 509 00



### Elbow 90°

to connect high pressure hoses to the low pressure regulator or to combine pressure regulators and automatic changeover valves

#### Elbow 90°

M20 x 1.5 nut x M20 x 1.5 M

14 509 00

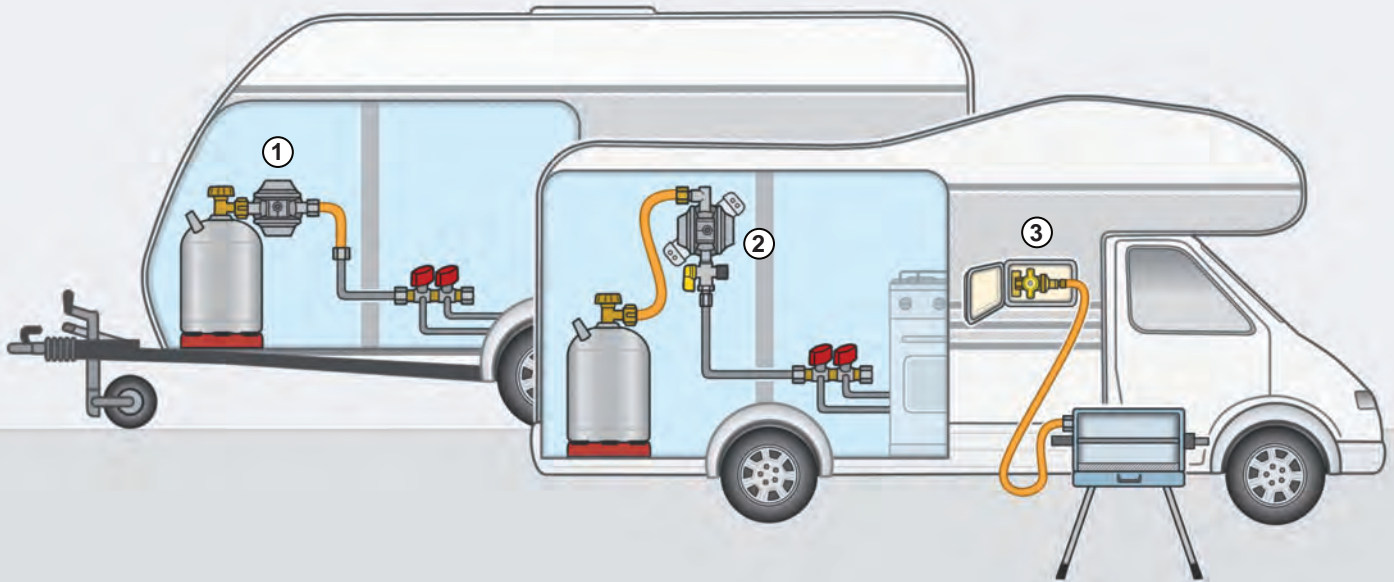
#### Accessories

Gasket for M20 x 1.5 nut

04 590 25

GOK

# Caravan and motor caravan



## Caravan and motor caravan

### Example of application ①

The tried and tested connection solution for caravans and motor caravans is the classic method of connecting a gas cylinder to the supply line of the vehicle.

The low pressure regulator is connected directly to the LPG cylinder. The connection to the supply line of the vehicle is then made with a medium pressure hose.

### Example of application ②

To simplify travelling through Europe with its different cylinder connections, we recommend a low pressure regulator with wall bracket.

The connection to the gas cylinder is made with the suitable country-specific high pressure hose without the low pressure regulator having to be replaced.

### Example of application ③

With a Variant outlet box, gas appliances, such as BBQs and stoves, outside the vehicle can also be supplied via the internal LPG installation.

The connection to the LPG appliance is made simply and safely with a medium pressure hose and a quick coupler on the vehicle.

Consequently, you no longer have to carry additional LPG cylinders.



## Low pressure regulator PS 16 bar

Part no.

for connection to gas cylinders to regulate the pressure to the nominal pressure of the gas appliance

consisting of: low pressure regulator with integrated safety device against overpressure

### Advantages and equipment

- design with pressure gauge to check for leaks in the system
- design with extended inlet nozzle, 90° outlet suitable for VW campervans with Westfalia fit-out
- type EN61-DS meets the requirements of the professional association in Germany (BGV D34) and is suitable for commercially used caravans and motor caravans

### Approval

- EC type approval according to PED (EN 12864 annex D)

### Note

- To determine the capacity stage, add all the nominal flows of all appliances together.
- To use the regulator de-icer, we recommend that you use the regulator with pressure gauge.

### Low pressure regulator

#### capacity stage 1, type EN61 with safety pressure relief valve PRV straight outlet

KLF x G 1/4 lh M 30 mbar 0.8 kg/h

01 280 00

KLF x G 1/4 lh M 30 mbar 0.8 kg/h with pressure gauge

01 280 10

#### 90° outlet

KLF x G 1/4 lh M 30 mbar 0.8 kg/h

01 280 09

KLF x G 1/4 lh M 30 mbar 0.8 kg/h with pressure gauge

01 280 19

#### with extended inlet nozzle, 90° outlet

KLF x G 1/4 lh M 30 mbar 0.8 kg/h

01 280 12

#### capacity stage 2, type EN71 with safety pressure relief valve PRV straight outlet

KLF x G 1/4 lh M 30 mbar 1.2 kg/h

01 285 00

KLF x G 1/4 lh M 30 mbar 1.2 kg/h with pressure gauge

01 285 10

#### capacity stage 3, type EN61-DS with overpressure safety device straight outlet

KLF x G 1/4 lh M 30 mbar 1.5 kg/h

01 290 00

KLF x G 1/4 lh M 30 mbar 1.5 kg/h with pressure gauge

01 290 10

### Packed for self-service

### Low pressure regulator

#### capacity stage 2, type EN71 with safety pressure relief valve PRV straight outlet

KLF x G 1/4 lh M 30 mbar 1.2 kg/h

01 285 70

KLF x G 1/4 lh M 30 mbar 1.2 kg/h with pressure gauge

01 285 72

### Accessories

Gas remote switch GSE G 1/4 lh nut x G 1/4 lh M, with LED

10 076 00







# Caravan and motor caravan



## Low pressure regulator PS 16 bar

Part no.

for connection to gas cylinders with high pressure hose, to regulate the pressure to the nominal pressure of the gas appliance  
consisting of: low pressure regulator with integrated safety device against overpressure

### Advantages and equipment

- with wall bracket
- design with pressure gauge to check for leaks in the system
- type EN61-DS meets the requirements of the professional association in Germany (BGV D34) and is suitable for commercially used caravans and motor caravans

### Approval

- EC type approval according to PED (EN 12864 annex D)

### Note

- To determine the capacity stage, add all the nominal flows of all appliances together.
- To use the regulator de-icer, we recommend that you use the regulator with pressure gauge.

### Low pressure regulator

capacity stage 2, type EN71 with safety pressure relief valve PRV

straight inlet

without test point

M20 x 1.5 M x compr. fit. 8 30 mbar 1.2 kg/h

01 287 00

M20 x 1.5 M x compr. fit. 10 30 mbar 1.2 kg/h

01 287 10

capacity stage 3, type EN61-DS with overpressure safety device

straight inlet

without test point

M20 x 1.5 M x compr. fit. 8 30 mbar 1.5 kg/h

01 291 00

M20 x 1.5 M x compr. fit. 8 30 mbar 1.5 kg/h with pressure gauge

01 291 20

M20 x 1.5 M x compr. fit. 10 30 mbar 1.5 kg/h

01 291 10

M20 x 1.5 M x compr. fit. 10 30 mbar 1.5 kg/h with pressure gauge

01 291 30

90° inlet

with test point

M20 x 1.5 M x compr. fit. 8 30 mbar 1.5 kg/h

01 294 60

M20 x 1.5 M x compr. fit. 10 30 mbar 1.5 kg/h

01 294 65

### Accessories

Gas remote switch GS 8 mm for one and two-cylinder systems 57013-01

10 076 10

Gas remote switch GS 10 mm for one and two-cylinder systems 57023-01

10 077 10

Elbow 90° M20 x 1.5 nut x M20 x 1.5 M

14 509 00

Gasket for M20 x 1.5 nut

04 590 25





## Gas filter

prevents contamination in the LPG installation  
protects the pressure regulator or the automatic changeover valve against contamination from oily aerosols and evaporation residues

### Advantages and equipment

- for all wall-mounted pressure regulators and automatic changeover valves
- higher separation degree of 99%
- integrated saturation display
- easy-to-replace filter cartridges

### Gas filter

M20 x 1.5 M x M20 x 1.5 nut

50600-01

11 781 00

### Accessories

Replacement cartridge

50680-01

11 781 20

Additional bracket

50020-18100

11 781 22

Elbow 90° M20 x 1.5 nut x M20 x 1.5 M

14 509 00

## Manual changeover valve type MUV PS 25 bar

for manual changeover with two-cylinder systems

### Advantages and equipment

- alternating withdrawal, gas cylinders can be replaced with no interruption to operation
- simultaneous connection of two gas cylinders

### Technical data

- material: brass

### Manual changeover valve type MUV

assembly in front of wall-mounted low pressure regulator

M20 x 1.5 M x M20 x 1.5 nut x M20 x 1.5 M

02 714 03

assembly in pipeline

compr. fit. 8 x compr. fit. 8 x compr. fit. 8

02 714 35

compr. fit. 10 x compr. fit. 10 x compr. fit. 10

02 714 36

### Accessories

Adapter M20 x 1.5 M x KLF M

14 509 03

Gasket for M20 x 1.5 nut

04 590 25





# Caravan and motor caravan



## DuoControl PS 16 bar

automatic changeover valve with integrated low pressure regulator for two-cylinder systems, for connection to gas cylinders with high pressure hose, to regulate pressure to the nominal pressure of the gas appliance  
consisting of: changeover valve, low pressure regulator with safety pressure relief valve PRV, operating button, operating and spare display, gas backflow prevention and test connector

### Advantages and equipment

- suitable for operation with just one gas cylinder
- can be used throughout Europe through the use of country-specific high pressure hoses
- cylinders can be replaced with no interruption to operation
- gas backflow prevention: backflow of gas is prevented when cylinders are being replaced
- design with compression fitting 10 as outlet connection, equipped with an adapter for connection to 8 mm piping

### Approval

- EC type approval according to PED

### Note

- Can be used on old vehicles without restriction!

### DuoControl

2 x M20 x 1.5 M	x	compr. fit. 10 / 8	30 mbar	1.5 kg/h	51510-01	11 493 01
2 x M20 x 1.5 M	x	compr. fit. 8	50 mbar	1.5 kg/h	51510-03	11 493 03

### Accessories

Remote display DuoC with integrated de-icer and cable harness 6 m	50210-01	11 499 00
Surface-mounted frame for remote display	40000-52600	11 499 05
De-icer 12 V	53101-01	11 499 02
Gas remote switch GS 8 mm for one and two-cylinder systems	57013-01	10 076 10
Gas remote switch GS 10 mm for one and two-cylinder systems	57023-01	10 077 10
Elbow 90° M20 x 1.5 nut x M20 x 1.5 M		14 509 00
Gasket for M20 x 1.5 nut		04 590 25
Adapter pipe socket 10 x compr. fit. 8		07 223 00
Adapter pipe socket 8 x compr. fit. 10		02 082 00



## DuoComfort PS 16 bar

automatic changeover valve for two-cylinder systems, for connection to gas cylinders with high pressure hose  
consisting of: changeover valve, operating button, operating and spare display and gas backflow prevention

### Advantages and equipment

- heating while driving only in combination with SecuMotion or MonoControl CS low pressure regulators
- do not heat while driving using only a low pressure regulator type EN71 (see, e. g., part no. 01 287 10) or type EN61-DS (see part no. 01 291 10)
- can be used throughout Europe through the use of country-specific high pressure hoses
- cylinders can be replaced with no interruption to operation
- gas backflow prevention: backflow of gas is prevented when cylinders are being replaced

### Approval

- EC type approval according to PED

### DuoComfort

2 x M20 x 1.5 M x M20 x 1.5 nut

51500-01

11 492 00

### Accessories

Remote display DuoC with integrated de-icer and cable harness 6 m

50210-01

11 499 00

Surface-mounted frame for remote display

40000-52600

11 499 05

De-icer 12 V

53101-01

11 499 02

Elbow 90° M20 x 1.5 nut x M20 x 1.5 M

14 509 00

Adapter M20 x 1.5 M x KLF M

14 509 03

Gasket for M20 x 1.5 nut

04 590 25



# Caravan and motor caravan



## High pressure hose assembly rubber PS 30 bar

to connect the gas cylinder and regulator

### Advantages and equipment

- can be used throughout Europe through the use of high pressure hoses with country-specific connections

### Approval

- DVGW-tested

### Technical data

- hose assembly: **rubber with textile lining**
- cold-resistant to -30°C

### Note

- The 750 mm long hose may be used only for cylinder mountings with a slide-out mechanism.

### High pressure hose assembly rubber

**hose dimensions 6.3 x 5.0 mm**

**connections: cylinder connection x regulator connection**

**for Germany**

KLF (G.12) x M20 x 1.5 nut x 450 mm

KLF (G.12) x M20 x 1.5 nut x 750 mm

**for the UK**

British POL (G.7) x M20 x 1.5 nut x 450 mm

British POL (G.7) x M20 x 1.5 nut x 750 mm

**for France and Switzerland**

FR Shell (G.2) x M20 x 1.5 nut x 450 mm

FR Shell (G.2) x M20 x 1.5 nut x 750 mm

**for Italy**

Italian connector (G.1) x M20 x 1.5 nut x 450 mm

Italian connector (G.1) x M20 x 1.5 nut x 750 mm

**for Sweden**

soft POL (G.10) x M20 x 1.5 nut x 450 mm

soft POL (G.10) x M20 x 1.5 nut x 750 mm

**for Europe**

Euro Shell (G.8) x M20 x 1.5 nut x 450 mm

Euro Shell (G.8) x M20 x 1.5 nut x 750 mm

**for the Netherlands**

Kombi Shell x M20 x 1.5 nut x 450 mm

Kombi Shell x M20 x 1.5 nut x 750 mm

### Accessories

Gasket for M20 x 1.5 nut

Part no.

04 701 11

04 702 11

04 585 00

04 585 01

04 589 00

04 591 01

04 707 10

04 708 00

04 714 10

04 714 00

04 586 00

04 586 01

04 709 10

04 710 00

04 590 25

- 30 °C



- 30 °C







## Two-cylinder system Caramatic® PS 16 bar

automatic regulator changeover, to connect to gas cylinders to regulate the pressure to the nominal pressure of the gas appliance

consisting of: central and changeover regulator, pressure gauge and hose assemblies

### Advantages and equipment

- with safety pressure relief valve PRV
- automatic changeover from operating to full spare cylinder
- operating and spare display via pressure gauge
- changeover option (without replacing the regulator) from operating to spare cylinder and vice versa
- gas backflow prevention: backflow of gas is prevented when cylinders are being replaced
- suitable for connecting a de-icer
- medium pressure hose assembly (hose dimensions 6.3 x 3.5 mm) G 3/8 lh nut x G 3/8 lh nut x 400 mm to connect the two regulators, brass connections, stainless steel compressive sleeves
- medium pressure hose assembly (hose dimensions 6.3 x 3.5 mm) G 1/4 lh nut x compr. fit. 8 x 400 mm for connecting the system to the piping, brass connections, stainless steel compressive sleeves
- adapter for connection to 8 or 10 mm pipe

### Approval

- EC type approval according to PED

### Technical data

- connections:
 

inlet:	KLF-Kombi G.19
outlet:	central regulator: G 1/4 lh M
	changeover regulator: G 3/8 lh M
- outlet pressure:
 

central regulator:	30 or 50 mbar
changeover regulator:	100 or 220 mbar

### Two-cylinder system Caramatic®

30 mbar 1.5 kg/h

50 mbar 1.5 kg/h

### FA+ with remote display

30 mbar 1.5 kg/h

50 mbar 1.5 kg/h

### Accessories

De-icer 12 V

Gas remote switch GSE G 1/4 lh nut x G 1/4 lh M, with LED

Medium pressure hose assembly, both ends G 3/8 lh nut x 400 mm, brass parts

Medium pressure hose assembly, both ends G 3/8 lh nut x 1500 mm, brass parts

Medium pressure hose assembly G 1/4 lh nut x compr. fit. 8 x 400 mm, brass parts

Part no.

02 018 02

02 018 01

02 018 12

02 018 11

10 075 00

10 076 00

04 504 01

04 504 02

04 440 01



# Caravan and motor caravan

## Information about using low pressure regulators for caravans

LPG installations in caravans and motor caravans are standardised in EN 1949. This standard requires a constant outlet pressure of 30 mbar for the pressure regulator. Pressure regulators must also comply with EN 12864 annex D.

EN 12864 recommends that pressure regulators are replaced with new ones within 10 years of the date of manufacture.

As regards the operation and recurring tests of these LPG installations, every country may define its own regulations, which must also be observed.



## Low pressure regulator type EN61 PS 16 bar

Part no.

for connection to gas cylinders to regulate the pressure to the nominal pressure of the gas appliance

### Advantages and equipment

- with safety pressure relief valve PRV
- vent plug that also prevents moisture, such as rainwater, getting inside the regulator
- design with extended inlet nozzle, 90° outlet suitable for VW campervans with Westfalia fit-out

### Approval

- EC type approval according to PED

### Note

- To use the regulator de-icer, we recommend that you use the regulator with pressure gauge.

### Low pressure regulator type EN61

#### straight outlet

KLF	x	G 1/4 lh M	50 mbar	1.5 kg/h	
KLF	x	G 1/4 lh M	50 mbar	1.5 kg/h	with pressure gauge

01 113 00

01 113 05

#### 90° outlet

KLF	x	G 1/4 lh M	50 mbar	0.8 kg/h	
KLF	x	G 1/4 lh M	50 mbar	0.8 kg/h	with pressure gauge

01 113 41

01 113 43

#### with extended inlet connector, 90° outlet

KLF	x	G 1/4 lh M	50 mbar	0.8 kg/h	
-----	---	------------	---------	----------	--

01 113 42

### Packed for self-service

### Low pressure regulator type EN61

#### straight outlet

KLF	x	G 1/4 lh M	50 mbar	1.5 kg/h	
KLF	x	G 1/4 lh M	50 mbar	1.5 kg/h	with pressure gauge

01 113 70

01 113 72

### Accessories

Gas remote switch GSE G 1/4 lh nut x G 1/4 lh M, with LED

10 076 00

### Replacement part

Pressure gauge radial, 0 to 16.0 bar, Ø 40 mm, G 1/8 B M

01 100 33





## Medium pressure regulator PS 16 bar

for connection to gas cylinders to regulate the pressure to the nominal pressure of the gas appliance

### Advantages and equipment

- for heaters with 0.5 bar connection pressure, such as from Primus

### Medium pressure regulator

Komb.A x G 3/8 lh M 0.5 bar 1 kg/h

### Accessories

Medium pressure hose assembly G 3/8 lh nut x compr. fit. 8 x 400 mm

Part no.

01 219 02

04 424 01



## Low pressure regulator type EN61 PS 16 bar

for connection to gas tanks firmly installed on the vehicle or for installation in the supply line (e.g. in combination with medium pressure regulator 01 219 02)

### Advantages and equipment

- with safety pressure relief valve PRV
- simple to install in the supply line
- perfect for retrofitting or replacing defective devices
- suitable for connecting a de-icer

### Approval

- EC type approval according to PED

### Low pressure regulator type EN61

compr. fit. 8 x compr. fit. 8 30 mbar 0.8 kg/h

compr. fit. 8 x compr. fit. 8 50 mbar 0.8 kg/h

### Accessories

Adapter 1/2 UNF F x pipe socket 8

Part no.

01 282 01

01 113 50

02 523 00



## Low pressure regulator type EN61-DS PS 16 bar

for connection to gas tanks firmly installed on the vehicle, to regulate the pressure to the nominal pressure of the gas appliance

consisting of: low pressure regulator with integrated overpressure safety device with test point

### Advantages and equipment

- the leak test can be performed without dismantling the regulator
- suitable for connecting a de-icer

### Approval

- EC type approval according to PED

### Low pressure regulator type EN61-DS

GF x compr. fit. 8 30 mbar 1.5 kg/h

compr. fit. 8 x compr. fit. 8 30 mbar 1.5 kg/h

### Accessories

Gas remote switch GS 8 mm for one and two-cylinder systems 57013-01

Adapter 1/2 UNF F x pipe socket 8

Adapter 1/2 UNF F x compr. fit. 8

Adapter 1/2 UNF F x GF M

Adapter GF F x compr. fit. 8

Part no.

01 293 21

01 293 22

10 076 10

02 523 00

02 527 00

02 528 00

02 531 00



# Caravan and motor caravan



## Low pressure regulator type EN61 PS 16 bar

for connection to gas cylinders and tanks firmly installed on the vehicle, to regulate the pressure to the nominal pressure of the gas appliance consisting of: low pressure regulator, safety pressure relief valve PRV, toggle valve and quick coupler with shut-off valve for emergency supply

### Advantages and equipment

- vent plug that also prevents moisture, such as rainwater, getting inside the regulator

### Approval

- EC type approval according to PED

### Technical data

- material: various inside parts: stainless steel

### Low pressure regulator type EN61

GF	x	quick coupler / compr. fit. 8	50 mbar	1 kg/h	02 481 00
compr. fit. 8	x	quick coupler / compr. fit. 8	50 mbar	1 kg/h	02 482 00

### Accessories

Gas remote switch GS 8 mm for one and two-cylinder systems	57013-01	10 076 10
Adapter 1/2 UNF F x pipe socket 8		02 523 00
Adapter 1/2 UNF F x compr. fit. 8		02 527 00
Adapter 1/2 UNF F x GF M		02 528 00
Adapter GF F x compr. fit. 8		02 531 00



## Low pressure regulator for fixed lines

for connecting 30 mbar caravans and motor caravans to 50 mbar fixed lines

### Advantages and equipment

- the low pressure regulator is installed in the fixed line outside the vehicle and regulates the pressure from 50 to 30 mbar

### Note

- The low pressure regulator is not suitable for installation in the vehicle!

### Low pressure regulator for fixed lines

compr. fit. 8	x	compr. fit. 8	30 mbar	1.5 kg/h	01 450 00
---------------	---	---------------	---------	----------	-----------



## Supply pressure regulator type VDR 50/30 PS 1 bar

for safe, compliant integration of 30 mbar devices in 50 mbar gas systems in vehicles and boats

### Advantages and equipment

- easy to install in the respective device line
- integrated bypass bore for gas leak test up to the appliance
- ideal if the gas system is being retrofitted or faulty devices are being replaced

### Approval

- EC type test according to Gas Appliance Directive

### Supply pressure regulator type VDR 50/30

compr. fit. 8	x	compr. fit. 8	30 mbar	0.8 kg/h	52150-01	11 445 00
---------------	---	---------------	---------	----------	----------	-----------



## Gas cylinder valve for butane cylinders

for connection to butane cylinders up to 3 kg filling weight, e. g. Campingaz®

### Advantages and equipment

- with control valve (open - closed)
- with safety pressure relief valve - response pressure 13.8 bar

### Approval

- type-tested

### Technical data

- housing material: brass

### Gas cylinder valve for butane cylinders

GAZ (M16 x 1.5 male thread) x KLF male thread

GAZ (M16 x 1.5 male thread) x Shell male thread

### Packed for self-service

### Gas cylinder valve for butane cylinders

GAZ (M16 x 1.5 male thread) x KLF male thread

### Accessories

Gasket for small cylinder valve, material NBR

Gasket for GAZ connection, material NBR

Part no.

09 736 00

09 736 05

09 736 70

10 071 22

20 015 29



## Gas cylinder valve type CGV for propane cylinders

for connection to propane cylinders up to 5 kg filling weight, e. g. Alumini cylinders

### Advantages and equipment

- with control valve (open - closed)
- with pressure relief valve - response pressure 30 bar

### Approval

- EC type test according to Directive on Transportable Pressure Equipment

### Technical data

- housing material: brass

### Gas cylinder valve type CGV for propane cylinders

GAZ (M16 x 1.5 male thread) x KLF male thread

### Accessories

Gasket for small cylinder valve, material NBR

Gasket for GAZ connection, material NBR

Part no.

09 737 00

10 071 22

20 015 29



## Gas cylinder valve type CGV for propane cylinders

for connection to propane cylinders up to 5 kg filling weight, e. g. Primus cylinders

### Advantages and equipment

- with control valve (open - closed)
- with pressure relief valve - response pressure 30 bar

### Technical data

- housing material: brass

### Gas cylinder valve type CGV for propane cylinders

Primus (M14 x 1.5 male thread) x KLF male thread

### Accessories

Gasket for small cylinder valve, material NBR

Part no.

09 737 02

10 071 22





# Caravan and motor caravan



## Distributor valve PS 16 bar

Part no.

quick-action fitting according to DIN 4817-1, only fully open or fully closed setting

### Advantages and equipment

- including a blind plug
- including stickers

### Approval

- DIN-DVGW-tested

### Technical data

- material: brass

### Distributor valve

#### design with nut and olive zinc-plated

compr. fit. 8 x 2 x compr. fit. 8  
compr. fit. 8 x 3 x compr. fit. 8  
compr. fit. 8 x 4 x compr. fit. 8  
compr. fit. 10 x 2 x compr. fit. 8  
compr. fit. 10 x 3 x compr. fit. 8  
compr. fit. 10 x 4 x compr. fit. 8

03 500 00  
03 501 00  
03 502 00  
03 510 00  
03 511 00  
03 512 00

### Packed for self-service

### Distributor valve

#### design with nut and olive zinc-plated

compr. fit. 8 x 2 x compr. fit. 8  
compr. fit. 8 x 3 x compr. fit. 8  
compr. fit. 8 x 4 x compr. fit. 8

03 500 70  
03 501 70  
03 502 70

### Accessories

Blind plug 8 mm  
Blind plug 10 mm  
Set of symbols

03 505 00  
03 515 00  
03 506 00



## Coupling valve type SKU PS 5 bar

Part no.

quick-action fitting with safety coupling according to DIN 4817-1, only fully open or fully closed setting

### Advantages and equipment

- the shut-off valve can be opened and closed only when the gas hose is connected
- a special device protects the quick coupler from manipulation - it can be unlocked only with the suitable plug-in fitting

### Approval

- DVGW-tested

### Technical data

- material: brass

### Coupling valve

#### type SKU 03 415 with straight-way valve

compr. fit. 8 x quick coupler

03 415 00

#### type SKU 03 420 with branch stop valve

compr. fit. 8 x compr. fit. 8 x quick coupler

03 420 00





### Test point

to check for leaks in LPG systems in vehicles

#### Advantages and equipment

- especially suitable for Triomatic systems and new regulators according to EN 12864 annex D, for wall mounting
- by installing the test point, it is not necessary to dismantle the regulator on the wall to test the system for leaks
- connection of the leak tester (see, e. g., part no. 02 611 10) by means of a test adapter
- access to the regulator is blocked via the ball valve
- coupling nut and tightened olive on the inlet side

#### Approval

- DVGW-tested

#### Test point

pipe socket 8 x compr. fit. 8

pipe socket 10 x compr. fit. 10

#### Accessories

Test hose G 1/4 lh nut x adapter for test point x 750 mm

Part no.

02 618 00

02 618 10

02 618 06



### Quick coupler brass type SKU 02 449 PS 5 bar

for quick connection of pipes to hose assemblies

#### Advantages and equipment

- with protective cap
- the gas flow is interrupted when the coupler is disconnected
- the quick coupler is not intended as a shut-off device, and must always be used in combination with a shut-off valve
- use only standardised plug-in fittings for the connection with the hose
- a special device protects the quick coupler from manipulation - it can be unlocked only with the suitable plug-in fitting

#### Approval

- DVGW-tested

#### Quick coupler brass type SKU 02 449

##### compression fitting x quick coupler

compr. fit. 8 x quick coupler

compr. fit. 8 x quick coupler and plug-in fitting with 8 mm pipe socket

##### female thread x quick coupler

M14 x 1.5 F x quick coupler

Packed for self-service

#### Quick coupler brass type SKU 02 449

##### compression fitting x quick coupler

compr. fit. 8 x quick coupler and plug-in fitting with 8 mm pipe socket

#### Accessories

Plug-in fitting x nozzle 6 mm, brass

Plug-in fitting x pipe socket 8 mm, brass

Protective cap

Part no.

02 449 00

02 449 01

02 449 04

02 449 71

02 450 25

02 452 25

02 451 24





# Caravan and motor caravan



## Medium pressure hose assembly rubber PS 10 bar

Part no.

to connect fittings, consuming appliances and piping

### Approval

- DVGW-tested

### Technical data

- hose assembly: rubber with textile lining
- cold-resistant to -30°C

Medium pressure hose assembly rubber  
hose dimensions 6.3 x 3.5 mm

connections: coupling nut x compression fitting

G 1/4 lh nut	x	compr. fit.	8	x	300 mm	04 401 00
G 1/4 lh nut	x	compr. fit.	8	x	400 mm	04 402 00
G 1/4 lh nut	x	compr. fit.	8	x	450 mm	04 401 02
G 1/4 lh nut	x	compr. fit.	8	x	750 mm	04 405 01
G 1/4 lh nut	x	compr. fit.	10	x	300 mm	04 409 00
G 1/4 lh nut	x	compr. fit.	10	x	400 mm	04 409 03
G 1/4 lh nut	x	compr. fit.	10	x	750 mm	04 409 07

connections: coupling nut x plug-in fitting

G 1/4 lh nut	x	plug-in fitting	x	300 mm	04 220 00
G 1/4 lh nut	x	plug-in fitting	x	400 mm	04 221 00
G 1/4 lh nut	x	plug-in fitting	x	800 mm	04 222 00
G 1/4 lh nut	x	plug-in fitting	x	1000 mm	04 223 00
G 1/4 lh nut	x	plug-in fitting	x	1500 mm	04 224 00
G 1/4 lh nut	x	plug-in fitting	x	2000 mm	04 225 00
G 1/4 lh nut	x	plug-in fitting	x	2500 mm	04 226 00
G 1/4 lh nut	x	plug-in fitting	x	3000 mm	04 227 00
G 1/4 lh nut	x	plug-in fitting	x	5000 mm	04 227 05

- 30 °C



- 30 °C



## Medium pressure hose assembly plastic PS 10 bar

Part no.

to connect fittings, consuming appliances and piping

### Approval

- DVGW-tested

### Technical data

- hose assembly: plastic with textile lining

Medium pressure hose assembly plastic  
hose dimensions 6.3 x 3.5 mm

connections: coupling nut x compression fitting

G 1/4 lh nut	x	compr. fit.	8	x	300 mm	04 401 30
G 1/4 lh nut	x	compr. fit.	8	x	400 mm	04 402 30
G 1/4 lh nut	x	compr. fit.	8	x	450 mm	04 401 27
G 1/4 lh nut	x	compr. fit.	8	x	750 mm	04 405 31
G 1/4 lh nut	x	compr. fit.	10	x	400 mm	04 409 31
G 1/4 lh nut	x	compr. fit.	10	x	800 mm	04 409 33





## Leak tester type 4071

enables a quick and sound leak test of the LPG system at the press of a button

### Advantages and equipment

- with fixing screws
- with reinforcement rings
- including glycol mixture; to test also at temperatures below freezing
- if there is a leak in the LPG system, bubbles appear in the inspection glass

### Approval

- EC type test according to Gas Appliance Directive

### Technical data

- maximum operating pressure: 2 bar
- pressure loss: < 1 mbar

### Note

- It can be installed with all low pressure LPG systems in caravans and motor caravans!

### Leak tester type 4071

#### straight outlet

compr. fit. 8 x compr. fit. 10  
compr. fit. 10 x compr. fit. 10

#### 90° outlet

pipe socket 8 x compr. fit. 8

Part no.

02 004 62

02 004 63

02 004 64





# Caravan and motor caravan



## Information about compression fittings

For the correct choice and installation of compression fittings, please refer to the GOK installation instructions and the data sheets for compression fittings (at [www.gok-online.de](http://www.gok-online.de) under Downloads / Technical Documentation).

If you are installing compression fittings with copper or aluminium pipe, you must use a reinforcement ring!  
For aluminium pipe, use a steel reinforcement ring!

All compression fittings are approved by the DVGW.



### Straight compression fitting type G

EN ISO 8434-1 - SC

**Straight compression fitting type G  
with steel olive for steel pipes**

compr. fit. 8 x compr. fit. 8 series L

compr. fit. 10 x compr. fit. 10 series L

Packed for self-service

**Straight compression fitting type G  
with steel olive for steel pipes**

compr. fit. 8 x compr. fit. 8 series L

compr. fit. 10 x compr. fit. 10 series L

Part no.

07 702 00

07 703 00

07 702 70

07 703 70



### Elbow compression fitting type W

EN ISO 8434-1 - EC

**Elbow compression fitting type W  
with steel olive for steel pipes**

compr. fit. 8 x compr. fit. 8 series L

compr. fit. 10 x compr. fit. 10 series L

Packed for self-service

**Elbow compression fitting type W  
with steel olive for steel pipes**

compr. fit. 8 x compr. fit. 8 series L

compr. fit. 10 x compr. fit. 10 series L

Part no.

07 708 00

07 709 00

07 708 70

07 709 70



### T-shape compression fitting type T

EN ISO 8434-1 - TC

**T-shape compression fitting type T  
with steel olive for steel pipes**

compr. fit. 8 x compr. fit. 8 x compr. fit. 8 series L

compr. fit. 10 x compr. fit. 10 x compr. fit. 10 series L

Packed for self-service

**T-shape compression fitting type T  
with steel olive for steel pipes**

compr. fit. 8 x compr. fit. 8 x compr. fit. 8 series L

compr. fit. 10 x compr. fit. 10 x compr. fit. 10 series L

Part no.

07 714 00

07 715 00

07 714 70

07 715 70





## Straight reducing compression fitting type GR

EN ISO 8434-1 - RDSC

**Straight reducing compression fitting type GR  
with steel olive for steel pipes**

compr. fit. 10 x compr. fit. 8 series L

Packed for self-service

**Straight reducing compression fitting type GR  
with steel olive for steel pipes**

compr. fit. 10 x compr. fit. 8 series L

Part no.

07 727 00

07 727 70



## Elbow reducing compression fitting type WR

EN ISO 8434-1 - RDEC

**Elbow reducing compression fitting type WR  
with steel olive for steel pipes**

compr. fit. 10 x compr. fit. 8 series L

Part no.

07 734 00



## T-shape reducing compression fitting type TR

EN ISO 8434-1 - RDBTC or RDRTC

**T-shape reducing compression fitting type TR  
with steel olive for steel pipes**

compr. fit. 8 x compr. fit. 10 x compr. fit. 8 series L

compr. fit. 10 x compr. fit. 8 x compr. fit. 10 series L

Part no.

07 748 00

07 763 00



## Straight screw-in compression fitting conical type GERK

DIN 2353 - type B with screwed plug DIN 3852-2 type C

### Note

- Screw connections with conical male thread R for cylindrical female threads Rp may be used only with elements made from suitably ductile materials (e.g. steel, Cu-Zn or Al wrought alloys).

**Straight screw-in compression fitting conical type GERK  
with steel olive for steel pipes**

compr. fit. 8 x R 1/2 M series L

Part no.

07 794 00



## Elbow screw-in compression fitting conical type WERK

DIN 2353 - type G with screwed plug DIN 3852-2 type C

### Note

- Screw connections with conical male thread R for cylindrical female threads Rp may be used only with elements made from suitably ductile materials (e.g. steel, Cu-Zn or Al wrought alloys).

**Elbow screw-in compression fitting conical type WERK  
with steel olive for steel pipes**

compr. fit. 8 x R 1/2 M series L

Part no.

07 051 00



# Caravan and motor caravan



## Straight screw-on compression fitting type GAI

one side compression fitting, other side female pipe thread tapped hole  
DIN 3852-2 - type Y without counterbore

### Straight screw-on compression fitting type GAI with steel olive for steel pipes

compr. fit. 8 x G 1/2 F series L

Packed for self-service

### Straight screw-on compression fitting type GAI with steel olive for steel pipes

compr. fit. 8 x G 1/2 F series L

Part no.

07 768 00

07 768 70



## Elbow screw-on compression fitting type WAI

one side female pipe thread tapped hole DIN 3852-2 - type Y without counterbore, other side compression fitting

### Elbow screw-on compression fitting type WAI with steel olive for steel pipes

G 1/2 F x compr. fit. 8 series L

Packed for self-service

### Elbow screw-on compression fitting type WAI with steel olive for steel pipes

G 1/2 F x compr. fit. 8 series L

Part no.

07 780 00

07 780 70



## Straight reducer insert type RED

connection reducer fitting based on EN ISO 8434-1, one side pipe socket with outer diameter, other side compression fitting

### Straight reducer insert type RED with steel olive for steel pipes

pipe socket 8 x compr. fit. 10 series L

pipe socket 10 x compr. fit. 8 series L

Part no.

02 082 00

07 223 00



## Adjustable elbow compression fitting type EVW

screw connection with adjustable direction based on EN ISO 8434-1, one side compression fitting, other side pipe socket with outer diameter, 90° elbow

### Adjustable elbow compression fitting type EVW with steel olive for steel pipes

compr. fit. 8 x pipe socket 8 series L

compr. fit. 10 x pipe socket 10 series L

Part no.

07 872 00

07 873 00



## Straight bulkhead compression fitting type SV

EN ISO 8434-1 - BHSC

### Straight bulkhead compression fitting type SV with steel olive for steel pipes

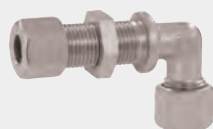
compr. fit. 8 x compr. fit. 8 series L

compr. fit. 10 x compr. fit. 10 series L

Part no.

07 354 00

07 355 00



## Elbow bulkhead compression fitting type WSV

EN ISO 8434-1 - BHEC

### Elbow bulkhead compression fitting type WSV with steel olive for steel pipes

compr. fit. 8 x compr. fit. 8 series L

compr. fit. 10 x compr. fit. 10 series L

Part no.

07 371 00

07 372 00



## Leak tester type 150Z

to check for leaks in LPG systems in vehicles, with additional test volume according to EN 1949

consisting of: pressure limiter, test pressure gauge 0 to 250 mbar quality class 1.0 (pressure resistant to 2.5 bar), hand pump, plastic case and 600 cm<sup>3</sup> additional volume

### Advantages and equipment

- for vehicles with a pipe volume of less than 700 cm<sup>3</sup> the additional volume of 600 cm<sup>3</sup> can be used for testing
- pressure limiter prevents the pressure gauge being damaged

### Leak tester type 150Z

complete

### Accessories

Test hose G 1/4 lh nut x adapter for test point x 750 mm

Additional volume 600 cm<sup>3</sup>

Part no.

02 611 10

02 618 06

02 611 40



## Leak tester type 150

to check for leaks in LPG systems in vehicles, according to German G 607

consisting of: pressure limiter, test pressure gauge 0 to 250 mbar quality class 1.0 (pressure resistant to 2.5 bar), hand pump, transport case and two adapters G 1/4 lh F x G 3/8 lh M and G 1/4 lh F x G 1/2 lh M

### Advantages and equipment

- pressure limiter prevents the pressure gauge being damaged

### Leak tester type 150

with hand pump and transport case

like 02 611 00, but with 125 ml leak detector spray

### Accessories

Retrofit kit for additional volume 600 cm<sup>3</sup>

Additional volume 600 cm<sup>3</sup>

Hose assembly for connection to pipeline: G 1/4 lh nut x compr. fit. 8 x 400 mm

Test pressure gauge 0-250 mbar, quality class 1.0

Adapter brass G 1/4 lh F x G 3/8 lh M

Adapter brass G 1/4 lh F x G 1/2 lh M

Gasket for outlet G 1/4 lh male thread on leak tester type 150

Part no.

02 611 00

02 611 01

02 611 06

02 611 40

04 402 00

02 616 26

02 600 32

02 600 33

02 600 59





# Caravan and motor caravan



## Variant outlet box

depending on design, to connect additional gas appliances, such as stove, BBQ, lights, etc. To be used outdoors or to connect an outside shower or the vehicle to a water supply

The valve can be opened only when the hose is connected. Quick couplers for gas and water in unmistakable designs.

The different Variant outlet boxes are available in the following designs:

### Outside connection for LPG:

- connection to internal gas line pipe socket 8 mm

### Outside connection for LPG and water:

with quick coupler and flip switch (on and off) for submerged pump operation (plug-in connection 6.3 mm)

materials: suitable for drinking water

- gas safety coupling and water connection made from brass
- connection to internal gas line pipe socket 8 mm
- connection to internal water line 9 and 10 mm nozzles

### Outside connection for LPG and water:

with quick coupling for pressure pump operation

materials: suitable for drinking water

- gas safety coupling and water connection made from brass
- connection to internal gas line pipe socket 8 mm
- connection to internal water line 9 and 10 mm nozzles

### Outside connection for external water supply:

with pressure regulator as described under water regulator (see, e.g., part no. 21 733 20)

materials: suitable for drinking water

- connection to internal water line pipe socket 8 mm
- plug-in fitting connection for water coupling 1/2

### Note

- To install the outlet box on the outside of the vehicle a 155 x 65 mm cutout in the vehicle body is required!

## Variant outlet box

### Outside connection for LPG

with cylinder lock

21 731 05

without cylinder lock

21 731 00

### Outside connection for LPG and water

#### with flip switch

with cylinder lock

21 733 05

without cylinder lock

21 733 00

#### without flip switch

with cylinder lock

21 737 05

without cylinder lock

21 737 00

### Outside connection for external water supply

with cylinder lock

21 734 05

without cylinder lock

21 734 00

### Accessories

Medium pressure hose assembly G 1/4 lh nut x plug-in fitting x 1500 mm

04 224 00

Hose connector compr. fit. 8 x 6 mm nozzle

14 468 00





### Water regulator

to reduce pressure when an external water supply is connected

The pressure regulator with integrated non-return valve protects the supply system and the consuming devices against damage from excess pressure and also stops water flowing back to the external water supply.

#### Advantages and equipment

- materials: suitable for drinking water

#### Technical data

- inlet pressure: to 10 bar
- flow pressure: 1.0 bar
- static pressure: 1.5 bar
- output: 7 L/min
- connection: plug-in fitting for water coupling 1/2

#### Water regulator

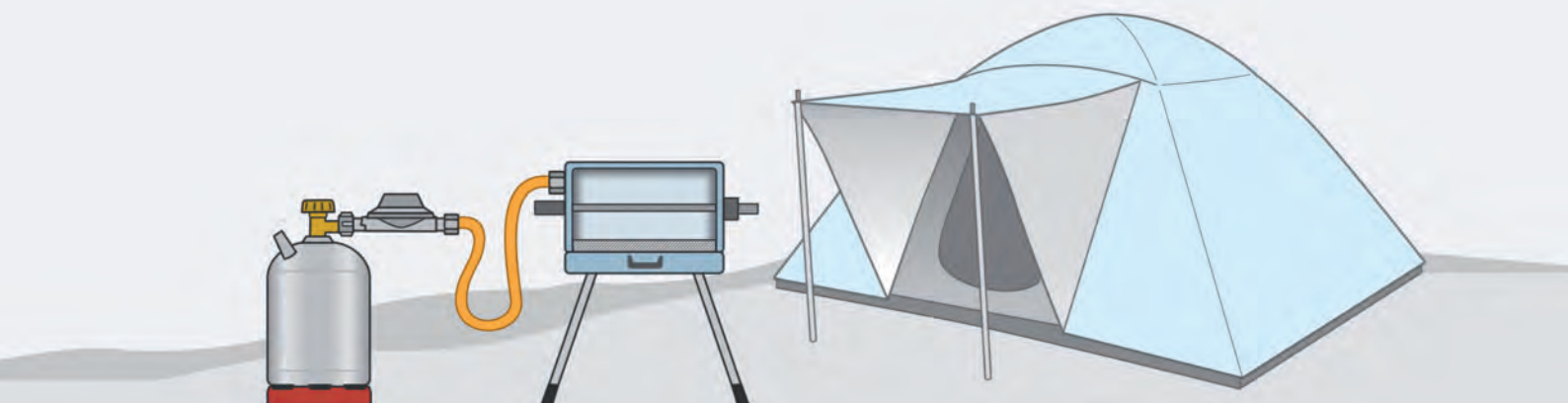
plug-in fitting 1/2 x compr. fit. 8

plug-in fitting 1/2 x 9 and 10 mm nozzle

Part no.

21 733 20

21 733 30



## Camping

Small cylinder systems outdoors can be operated with low pressure regulators without any additional safety equipment. According to the German DVGW worksheet G 612, the operating pressure is 50 mbar in Germany. Hose assemblies longer than 1500 mm must be equipped with an excess flow device.



### Low pressure regulator type EN61 PS 10 bar

for connection to Campingaz® cylinders or gas cartridges with screw-on thread, to regulate the pressure to the nominal pressure of the gas appliance

#### Advantages and equipment

- with shut-off valve

#### Approval

- EC type approval according to PED

#### Technical data

- inlet connection for gas cartridges with screw-on thread (7/16-28 UNEF F)
- inlet connection for Campingaz® cylinders (M16 x 1.5)
- inlet connection for Primus cylinders (M14 x 1.5)

#### Low pressure regulator type EN61 for gas cartridges

cartridge	x	G 1/4 lh M	50 mbar	1 kg/h
cartridge	x	G 1/4 lh M	29 (30) mbar	1 kg/h

#### for Campingaz® cylinders

GAZ	x	G 1/4 lh M	50 mbar	1 kg/h
GAZ	x	G 1/4 lh M	29 (30) mbar	1 kg/h

#### with integrated excess flow device

GAZ	x	G 1/4 lh M	50 mbar	0.6 kg/h
-----	---	------------	---------	----------

#### for Primus cylinders

Primus	x	G 1/4 lh M	29 (30) mbar	1 kg/h
--------	---	------------	--------------	--------

#### Packed for self-service

#### Low pressure regulator type EN61 for Campingaz® cylinders

GAZ	x	G 1/4 lh M	50 mbar	1 kg/h
-----	---	------------	---------	--------

#### with integrated excess flow device

GAZ	x	G 1/4 lh M	50 mbar	0.6 kg/h
-----	---	------------	---------	----------

Part no.

01 041 06

01 041 15

01 041 00

01 043 00

01 040 00

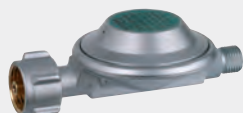
01 043 03

01 041 70

01 040 70







### Low pressure regulator type EN61 PS 16 bar

for connection to gas cylinders to regulate the pressure to the nominal pressure of the gas appliance

#### Approval

- EC type approval according to PED


#### Low pressure regulator type EN61 straight outlet

KLF x G 1/4 lh M 50 mbar 1 kg/h

KLF x G 1/4 lh M 29 (30) mbar 1 kg/h

#### 90° outlet

KLF x G 1/4 lh M 50 mbar 1 kg/h

Packed for self-service 

#### Low pressure regulator type EN61 straight outlet

KLF x G 1/4 lh M 50 mbar 1 kg/h

Part no.

01 001 00

01 001 04

01 001 80

01 001 70



### Low pressure regulator type EN61V50 PS 16 bar

for connection to gas cylinders to regulate the pressure to the nominal pressure of the gas appliance

#### Advantages and equipment

- dial for 11 different reproducible pressure settings

#### Approval

- EC type test according to PED

#### Low pressure regulator type EN61V50

KLF x G 1/4 lh M 25-50 mbar 1 kg/h

Packed for self-service 

#### Low pressure regulator type EN61V50

KLF x G 1/4 lh M 25-50 mbar 1 kg/h

Part no.

01 523 00

01 523 70



### Low pressure regulator type EN61 PS 16 bar

for connection to gas cylinders to regulate the pressure to the nominal pressure of the gas appliance

#### Advantages and equipment

- with shut-off device

#### Approval

- EC type test according to PED

#### Note

- Outlets that are not used must be closed with a blind nut.

#### Low pressure regulator type EN61

##### with 2 outlets

KLF x 2 x G 1/4 lh M 50 mbar 1 kg/h

KLF x 2 x G 1/4 lh M 29 (30) mbar 1 kg/h

##### with 3 outlets

KLF x 3 x G 1/4 lh M 50 mbar 1 kg/h

KLF x 3 x G 1/4 lh M 29 (30) mbar 1 kg/h

#### Packed for self-service

#### Low pressure regulator type EN61

##### with 2 outlets

KLF x 2 x G 1/4 lh M 50 mbar 1 kg/h

##### with 3 outlets

KLF x 3 x G 1/4 lh M 50 mbar 1 kg/h

#### Accessories

Blind nut G 1/4 lh nut zinc-plated with gasket

Part no.

01 044 00

01 044 02

01 046 00

01 046 03

01 044 70

01 046 70

04 002 05





### Gas cylinder valve for butane cylinders

for connection to butane cylinders up to 3 kg filling weight, e. g. Campingaz®

#### Advantages and equipment

- with control valve (open - closed)
- with safety pressure relief valve - response pressure 13.8 bar

#### Approval

- type-tested

#### Technical data

- housing material: brass

### Gas cylinder valve for butane cylinders

GAZ (M16 x 1.5 male thread) x KLF male thread

GAZ (M16 x 1.5 male thread) x Shell male thread

#### Packed for self-service

### Gas cylinder valve for butane cylinders

GAZ (M16 x 1.5 male thread) x KLF male thread

#### Accessories

Gasket for small cylinder valve, material NBR

Gasket for GAZ connection, material NBR

Part no.

09 736 00

09 736 05

09 736 70

10 071 22

20 015 29



### Gas cylinder valve type CGV for propane cylinders

for connection to propane cylinders up to 5 kg filling weight, e. g. Alumini cylinders

#### Advantages and equipment

- with control valve (open - closed)
- with pressure relief valve - response pressure 30 bar

#### Approval

- EC type test according to Directive on Transportable Pressure Equipment

#### Technical data

- housing material: brass

### Gas cylinder valve type CGV for propane cylinders

GAZ (M16 x 1.5 male thread) x KLF male thread

#### Accessories

Gasket for small cylinder valve, material NBR

Gasket for GAZ connection, material NBR

Part no.

09 737 00

10 071 22

20 015 29



### Gas cylinder valve type CGV for propane cylinders

for connection to propane cylinders up to 5 kg filling weight, e. g. Primus cylinders

#### Advantages and equipment

- with control valve (open - closed)
- with pressure relief valve - response pressure 30 bar

#### Technical data

- housing material: brass

### Gas cylinder valve type CGV for propane cylinders

Primus (M14 x 1.5 male thread) x KLF male thread

#### Accessories

Gasket for small cylinder valve, material NBR

Part no.

09 737 02

10 071 22



horizontal outlet



vertical outlet

## Gas anti-tilt device type KS-40

to protect portable gas appliances with ignition protection, e.g. patio heaters

### Advantages and equipment

- closes the gas feed if the appliance is at a dangerous angle
- opens automatically when the appliance is upright
- suitable for all other portable appliances with ignition protection that are at risk of toppling
- especially suitable for retrofitting existing appliances
- design with vertical outlet to save space

### Approval

- EC type test according to Gas Appliance Directive

### Technical data

- operating pressure: 29 (30) or 50 mbar
- maximum operating pressure: 65 mbar
- maximum tilt angle: 40°

### Gas anti-tilt device type KS-40

#### horizontal outlet

G 1/4 lh nut x G 1/4 lh M

#### vertical outlet

G 1/4 lh nut x G 1/4 lh M

Part no.

02 845 00

02 845 01

**Control valve 90° PS 4 bar**

for connection to the regulator outlet for infinitely variable control of consuming devices

**Advantages and equipment**

- with shut-off device
- for infinitely variable control of the gas feed, such as for BBQs and stoves

**Approval**

- DVGW-tested

**Control valve 90°**

G 1/4 lh nut x G 1/4 lh M

Packed for self-service 

**Control valve 90°**

G 1/4 lh nut x G 1/4 lh M

Part no.

09 745 00

09 745 70

**Branch valve PS 4 bar**

for connection to the regulator outlet so that several appliances can be connected to one regulator at the same time

**Advantages and equipment**

- with shut-off device
- for infinitely variable control of the gas feed, such as for BBQs or stoves

**Approval**

- DVGW-tested

**Technical data**

- material: brass


**Note**

- Outlets that are not used must be closed with a blind nut.

**Branch valve**

G 1/4 lh nut x 2 x G 1/4 lh M

G 1/4 lh nut x 3 x G 1/4 lh M

Packed for self-service 

**Branch valve**

G 1/4 lh nut x 2 x G 1/4 lh M

G 1/4 lh nut x 3 x G 1/4 lh M

**Accessories**

Blind nut G 1/4 lh nut zinc-plated with gasket

Part no.

09 706 00

09 740 00

09 706 70

09 740 70


04 002 05

**Double branch piece**

for connection to the regulator outlet so that two appliances can be connected to one regulator at the same time

**Double branch piece**

G 1/4 lh nut x 2 x G 1/4 lh M

Packed for self-service 

**Double branch piece**

G 1/4 lh nut x 2 x G 1/4 lh M

Part no.

09 744 00

09 744 70



### Excess flow valve low pressure PS 16 bar

to protect hoses

#### Advantages and equipment

- prevents gas escaping in case the hose assembly is damaged or becomes loose and closes the gas flow when the nominal flow rate is exceeded by 10%
- **automatic excess flow valve:**  
opens automatically, which keeps gas leaks to a minimum
- **manual excess flow valve:**  
no delay or leaks

#### Note

- To protect hose assemblies in commercial systems, excess flow valves must be used in Germany with hose assemblies longer than 400 mm.
- To protect hose assemblies in camping applications, excess flow valves must be used in Germany with hose assemblies longer than 1500 mm.

#### Excess flow valve low pressure

##### type SBS/AU automatic

G 1/4 lh nut x G 1/4 lh M 50 mbar 1.5 kg/h

G 1/4 lh nut x G 1/4 lh M 29 (30) mbar 1.5 kg/h

##### type SBS/MA manual

G 1/4 lh nut x G 1/4 lh M 50 mbar 1.5 kg/h

G 1/4 lh nut x G 1/4 lh M 29 (30) mbar 1.5 kg/h

#### Packed for self-service

#### Excess flow valve low pressure

##### type SBS/AU automatic

G 1/4 lh nut x G 1/4 lh M 50 mbar 1.5 kg/h

G 1/4 lh nut x G 1/4 lh M 29 (30) mbar 1.5 kg/h

##### type SBS/MA manual

G 1/4 lh nut x G 1/4 lh M 50 mbar 1.5 kg/h



automatic



manual

Part no.

02 850 00

02 850 01

02 853 00

02 853 09

02 850 70

02 850 71

02 853 70



### Medium pressure hose assembly rubber PS 10 bar

Part no.

to connect fittings, consuming appliances and piping

#### Approval

- DVGW-tested

#### Technical data

- hose assembly: rubber with textile lining
- cold-resistant to -30°C

Medium pressure hose assembly rubber  
hose dimensions 6.3 x 3.5 mm

connections: coupling nut x compression fitting

G 1/4 lh nut	x	compr. fit.	8	x	300 mm	04 401 00
G 1/4 lh nut	x	compr. fit.	8	x	400 mm	04 402 00
G 1/4 lh nut	x	compr. fit.	8	x	500 mm	04 403 00
G 1/4 lh nut	x	compr. fit.	8	x	600 mm	04 404 00
G 1/4 lh nut	x	compr. fit.	8	x	800 mm	04 405 00
G 1/4 lh nut	x	compr. fit.	8	x	1000 mm	04 406 00
G 1/4 lh nut	x	compr. fit.	8	x	1500 mm	04 408 00
G 1/4 lh nut	x	compr. fit.	8	x	2000 mm	04 422 00
G 1/4 lh nut	x	compr. fit.	8	x	2500 mm	04 410 00
G 1/4 lh nut	x	compr. fit.	8	x	3000 mm	04 423 00
G 1/4 lh nut	x	compr. fit.	8	x	5000 mm	04 413 00

connections: coupling nut x pipe socket

G 1/4 lh nut	x	pipe socket	8	x	300 mm	04 436 01
G 1/4 lh nut	x	pipe socket	8	x	400 mm	04 436 02
G 1/4 lh nut	x	pipe socket	8	x	800 mm	04 436 09
G 1/4 lh nut	x	pipe socket	8	x	1000 mm	04 436 00
G 1/4 lh nut	x	pipe socket	8	x	1500 mm	04 436 06
G 1/4 lh nut	x	pipe socket	8	x	2000 mm	04 436 10

connections: coupling nut x coupling nut

G 1/4 lh nut	x	G 1/4 lh nut	x	400 mm	04 454 02
G 1/4 lh nut	x	G 1/4 lh nut	x	800 mm	04 407 00
G 1/4 lh nut	x	G 1/4 lh nut	x	1000 mm	04 454 00
G 1/4 lh nut	x	G 1/4 lh nut	x	1500 mm	04 455 00
G 1/4 lh nut	x	G 1/4 lh nut	x	2000 mm	04 456 00
G 1/4 lh nut	x	G 1/4 lh nut	x	3000 mm	04 457 00
G 1/4 lh nut	x	G 1/4 lh nut	x	5000 mm	04 457 01

- 30 °C



- 30 °C



- 30 °C







- 30 °C



- 30 °C

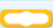


- 30 °C



## Medium pressure hose assembly rubber PS 10 bar

Part no.

Packed for self-service Medium pressure hose assembly rubber  
hose dimensions 6.3 x 3.5 mm

connections: coupling nut x compression fitting

G 1/4 lh nut	x	compr. fit. 8	x	300 mm	04 401 65
G 1/4 lh nut	x	compr. fit. 8	x	400 mm	04 402 65
G 1/4 lh nut	x	compr. fit. 8	x	500 mm	04 403 65
G 1/4 lh nut	x	compr. fit. 8	x	600 mm	04 404 65
G 1/4 lh nut	x	compr. fit. 8	x	800 mm	04 405 65
G 1/4 lh nut	x	compr. fit. 8	x	1000 mm	04 406 65
G 1/4 lh nut	x	compr. fit. 8	x	1500 mm	04 408 65
G 1/4 lh nut	x	compr. fit. 8	x	2000 mm	04 422 65
G 1/4 lh nut	x	compr. fit. 8	x	2500 mm	04 410 65
G 1/4 lh nut	x	compr. fit. 8	x	3000 mm	04 423 65
G 1/4 lh nut	x	compr. fit. 8	x	5000 mm	04 413 65

connections: coupling nut x coupling nut

G 1/4 lh nut	x	G 1/4 lh nut	x	800 mm	04 407 65
G 1/4 lh nut	x	G 1/4 lh nut	x	1000 mm	04 454 65
G 1/4 lh nut	x	G 1/4 lh nut	x	1500 mm	04 455 65
G 1/4 lh nut	x	G 1/4 lh nut	x	2000 mm	04 456 65
G 1/4 lh nut	x	G 1/4 lh nut	x	3000 mm	04 457 65

## Medium pressure hose assembly rubber PS 10 bar

Part no.

to connect fittings with a gas BBQ, such as from the Outdoorchef series

Technical data

- hose assembly: rubber with textile lining
- cold-resistant to -30°C

Medium pressure hose assembly rubber  
hose dimensions 6.3 x 3.5 mm

connections: coupling nut x coupling nut

G 1/4 lh nut	x	5/8 UNF nut	x	600 mm	04 508 01
G 1/4 lh nut	x	5/8 UNF nut	x	800 mm	04 508 04
G 1/4 lh nut	x	5/8 UNF nut	x	1000 mm	04 508 10



### Medium pressure hose assembly plastic PS 10 bar

Part no.

to connect fittings, consuming appliances and piping

#### Approval

- DVGW-tested

#### Technical data

- hose assembly: plastic with textile lining

Medium pressure hose assembly plastic  
hose dimensions 6.3 x 3.5 mm

connections: coupling nut x compression fitting

G 1/4 lh nut	x	compr. fit.	8	x	300 mm	04 401 30
G 1/4 lh nut	x	compr. fit.	8	x	400 mm	04 402 30
G 1/4 lh nut	x	compr. fit.	8	x	500 mm	04 403 30
G 1/4 lh nut	x	compr. fit.	8	x	600 mm	04 404 30
G 1/4 lh nut	x	compr. fit.	8	x	800 mm	04 405 30
G 1/4 lh nut	x	compr. fit.	8	x	1000 mm	04 406 30
G 1/4 lh nut	x	compr. fit.	8	x	1500 mm	04 408 30
G 1/4 lh nut	x	compr. fit.	8	x	2000 mm	04 422 30
G 1/4 lh nut	x	compr. fit.	8	x	2500 mm	04 410 30
G 1/4 lh nut	x	compr. fit.	8	x	3000 mm	04 423 30
G 1/4 lh nut	x	compr. fit.	8	x	5000 mm	04 413 30

connections: coupling nut x coupling nut

G 1/4 lh nut	x	G 1/4 lh nut	x	400 mm	04 454 34
G 1/4 lh nut	x	G 1/4 lh nut	x	800 mm	04 407 30
G 1/4 lh nut	x	G 1/4 lh nut	x	1000 mm	04 454 30
G 1/4 lh nut	x	G 1/4 lh nut	x	1500 mm	04 455 30
G 1/4 lh nut	x	G 1/4 lh nut	x	2000 mm	04 456 30
G 1/4 lh nut	x	G 1/4 lh nut	x	3000 mm	04 457 30
G 1/4 lh nut	x	G 1/4 lh nut	x	5000 mm	04 458 30

Packed for self-service 

Medium pressure hose assembly plastic  
hose dimensions 6.3 x 3.5 mm

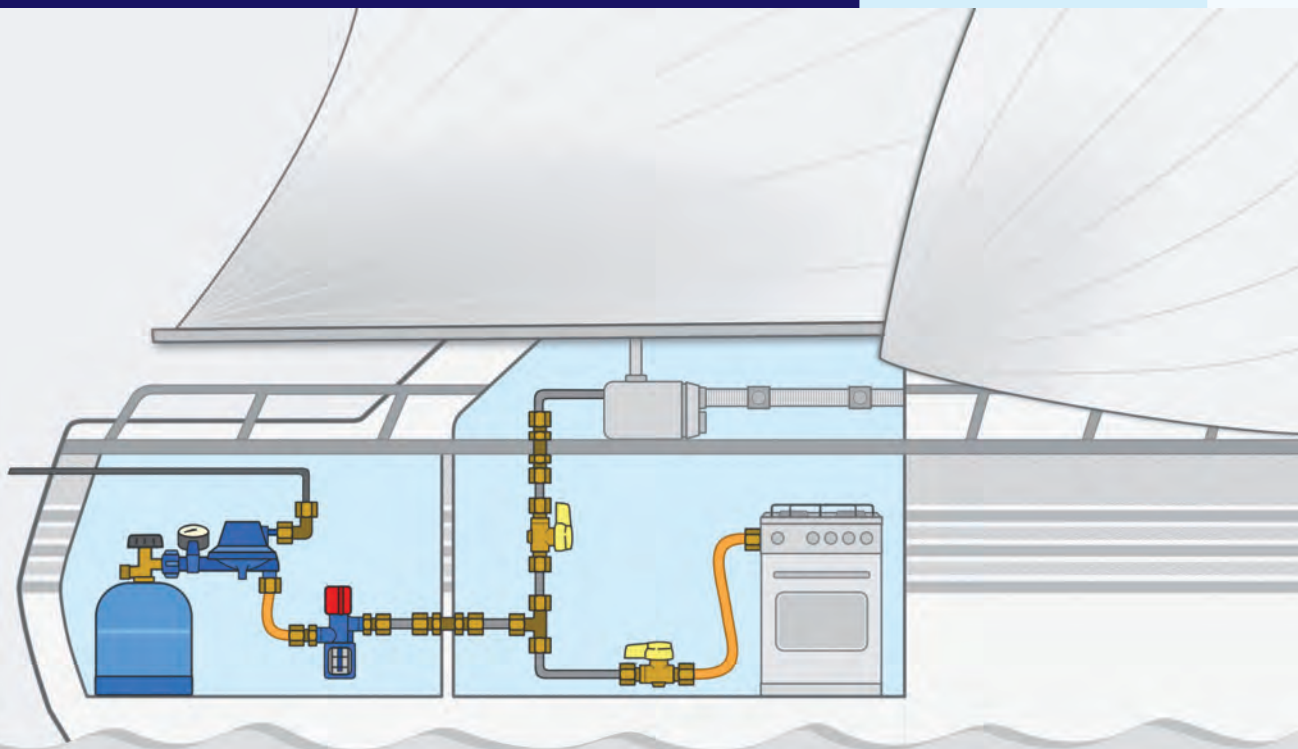
connections: coupling nut x compression fitting

G 1/4 lh nut	x	compr. fit.	8	x	300 mm	04 401 70
G 1/4 lh nut	x	compr. fit.	8	x	400 mm	04 402 70
G 1/4 lh nut	x	compr. fit.	8	x	500 mm	04 403 70
G 1/4 lh nut	x	compr. fit.	8	x	600 mm	04 404 70
G 1/4 lh nut	x	compr. fit.	8	x	800 mm	04 405 70
G 1/4 lh nut	x	compr. fit.	8	x	1000 mm	04 406 70
G 1/4 lh nut	x	compr. fit.	8	x	1500 mm	04 408 70
G 1/4 lh nut	x	compr. fit.	8	x	2000 mm	04 422 70
G 1/4 lh nut	x	compr. fit.	8	x	2500 mm	04 410 70
G 1/4 lh nut	x	compr. fit.	8	x	3000 mm	04 423 70

connections: coupling nut x coupling nut

G 1/4 lh nut	x	G 1/4 lh nut	x	800 mm	04 407 70
G 1/4 lh nut	x	G 1/4 lh nut	x	1000 mm	04 454 70
G 1/4 lh nut	x	G 1/4 lh nut	x	1500 mm	04 455 70
G 1/4 lh nut	x	G 1/4 lh nut	x	2000 mm	04 456 70
G 1/4 lh nut	x	G 1/4 lh nut	x	3000 mm	04 457 70

GOK



## Marine

LPG systems on boats are standardised in EN ISO 10239. This standard takes account of extreme stresses, such as corrosion, low and high temperatures and movement of the boat.

These requirements have been implemented in our marine product range. In particular, corrosion protection plays a significant role.

This is why only stainless steel or brass are used. Corrosion protection for other metals is provided with high-quality paint.

central  
regulatorchangeover  
regulator

### Two-cylinder system Caramatic® PS 16 bar

automatic regulator changeover, to connect to gas cylinders to regulate the pressure to the nominal pressure of the gas appliance

consisting of: central and changeover regulator, pressure gauge and hose assemblies

#### Advantages and equipment

- with safety pressure relief valve PRV
- automatic changeover from operating to full spare cylinder
- operating and spare display via pressure gauge
- changeover option (without replacing the regulator) from operating to spare cylinder and vice versa
- gas backflow prevention: backflow of gas is prevented when cylinders are being replaced
- suitable for connecting a de-icer
- medium pressure hose assembly (hose dimensions 6.3 x 3.5 mm)  
G 3/8 lh nut x G 3/8 lh nut x 400 mm to connect the two regulators, brass connections, stainless steel compressive sleeves
- medium pressure hose assembly (hose dimensions 6.3 x 3.5 mm)  
G 1/4 lh nut x compr. fit. 8 x 400 mm for connecting the system to the piping, brass connections, stainless steel compressive sleeves
- adapter for connection to 8 or 10 mm pipe

#### Approval

- EC type approval according to PED

#### Technical data

- connections:
 

inlet:	KLF-Kombi G.19
outlet:	central regulator: G 1/4 lh M changeover regulator: G 3/8 lh M
- outlet pressure:
 

central regulator:	30 or 50 mbar
changeover regulator:	100 or 220 mbar

#### Two-cylinder system Caramatic®

30 mbar 1.5 kg/h

50 mbar 1.5 kg/h

#### FA+ with remote display

30 mbar 1.5 kg/h

50 mbar 1.5 kg/h

#### Accessories

De-icer 12 V

Gas remote switch GSE G 1/4 lh nut x G 1/4 lh M, with LED

Medium pressure hose assembly, both ends G 3/8 lh nut x 400 mm, brass parts

Medium pressure hose assembly, both ends G 3/8 lh nut x 1500 mm, brass parts

Medium pressure hose assembly G 1/4 lh nut x compr. fit. 8 x 400 mm, brass parts

Part no.

02 018 02

02 018 01

02 018 12

02 018 11

10 075 00

10 076 00

04 504 01

04 504 02

04 440 01



### Gas cylinder valve for butane cylinders

for connection to butane cylinders up to 3 kg filling weight, e. g. Campingaz®

#### Advantages and equipment

- with control valve (open - closed)
- with safety pressure relief valve - response pressure 13.8 bar

#### Approval

- type-tested

#### Technical data

- housing material: brass

#### Gas cylinder valve for butane cylinders

GAZ (M16 x 1.5 male thread) x KLF male thread

GAZ (M16 x 1.5 male thread) x Shell male thread

#### Accessories

Gasket for small cylinder valve, material NBR

Gasket for GAZ connection, material NBR

Part no.

09 736 00

09 736 05

10 071 22

20 015 29



### Gas cylinder valve type CGV for propane cylinders

for connection to propane cylinders up to 5 kg filling weight, e. g. Alumini cylinders

#### Advantages and equipment

- with control valve (open - closed)
- with pressure relief valve - response pressure 30 bar

#### Approval

- EC type test according to Directive on Transportable Pressure Equipment

#### Technical data

- housing material: brass

#### Gas cylinder valve type CGV for propane cylinders

GAZ (M16 x 1.5 male thread) x KLF male thread

#### Accessories

Gasket for small cylinder valve, material NBR

Gasket for GAZ connection, material NBR

Part no.

09 737 00

10 071 22

20 015 29



### Gas cylinder valve type CGV for propane cylinders

for connection to propane cylinders up to 5 kg filling weight, e. g. Primus cylinders

#### Advantages and equipment

- with control valve (open - closed)
- with pressure relief valve - response pressure 30 bar

#### Technical data

- housing material: brass

#### Gas cylinder valve type CGV for propane cylinders

Primus (M14 x 1.5 male thread) x KLF male thread

#### Accessories

Gasket for small cylinder valve, material NBR

Part no.

09 737 02

10 071 22



### Information about using low pressure regulators on boats

LPG installations in small water crafts are standardised in EN ISO 10239. The requirements for pressure regulators from EN ISO 10239 are fulfilled if pressure regulators according to EN 12864 annex M, with a pressure gauge on the inlet side, are used.

EN 12864 annex M recommends that pressure regulators be replaced with new ones within 6 years of the date of manufacture.

As regards the operation and recurring tests of these LPG installations, every country may define its own regulations, which must also be observed.



### Low pressure regulator PS 16 bar

for connection to gas cylinders to regulate the pressure to the nominal pressure of the gas appliance

#### Advantages and equipment

- capacity stage 1 with safety pressure relief valve PRV, response pressure 150 mbar, to discharge the excessive pressure a blow-off line can be installed on the pipe socket (8 mm)
- capacity stage 3 with overpressure safety device, safety pressure 100 mbar

#### Approval

- EC type approval according to PED
- corrosion resistance according to EN 12864 annex M

#### Note

- To determine the capacity stage, add all the nominal flows of all appliances together.
- For LPG systems according to EN ISO 10239, only low pressure regulators with pressure gauge may be used.

### Low pressure regulator capacity stage 1, type EN61

#### 90° outlet

KLF	x	G 1/4 lh M	30 mbar	0.8 kg/h	with pressure gauge	01 280 14
FR Shell	x	G 1/4 lh M	30 mbar	0.8 kg/h	with pressure gauge	01 280 17
KLF	x	G 1/4 lh M	30 mbar	0.8 kg/h		01 280 04

#### U-shape

KLF	x	G 1/4 lh M	30 mbar	0.8 kg/h	with pressure gauge	01 280 07
FR Shell	x	G 1/4 lh M	30 mbar	0.8 kg/h	with pressure gauge	01 280 20
KLF	x	G 1/4 lh M	30 mbar	0.8 kg/h		01 280 06

### capacity stage 3, type EN61-DS

#### 90° outlet

KLF	x	G 1/4 lh M	30 mbar	1.5 kg/h	with pressure gauge	01 290 17
KLF	x	G 1/4 lh M	30 mbar	1.5 kg/h		01 290 07

#### Accessories

Gas remote switch GSE G 1/4 lh nut x G 1/4 lh M, with LED	10 076 00
---	-----------







### Low pressure regulator type FL 92-4 Marine PS 16 bar

for connection to gas cylinders to regulate the pressure to the nominal pressure of the gas appliance

#### Advantages and equipment

- with safety pressure relief valve PRV
- with insect protection
- suitable for private leisure boats

#### Approval

- EC type test according to Gas Appliance Directive
- corrosion resistance according to EN 12864 annex M

#### Note

- Not suitable for commercial use in Germany, because the low pressure regulator is not equipped with a safety overpressure shut-off valve (OPSO).
- The evaporation capacity of gas cylinders must be observed.

#### Low pressure regulator type FL 92-4 Marine

GF x G 1/2 lh M 30 mbar 2.5 kg/h

GF x G 1/2 lh M 50 mbar 4.0 kg/h

#### Accessories

Medium pressure hose assembly G 1/2 lh nut x compr. fit. 12 x 400 mm, brass parts

Part no.

01 004 02

01 004 01

04 444 11



### Low pressure regulator type EN61 PS 16 bar

for connection to gas cylinders to regulate the pressure to the nominal pressure of the gas appliance

#### Advantages and equipment

- with safety pressure relief valve PRV, response pressure 150 mbar, to discharge the excessive pressure a blow-off line can be installed on the pipe socket (8 mm)
- tested by the German TÜV supervisory authority for corrosion resistance (seawater resistant)
- design with pressure gauge suitable for connecting a de-icer

#### Approval

- EC type approval according to PED

#### Low pressure regulator type EN61 straight outlet

KLF	x	G 1/4 lh M	50 mbar	1.5 kg/h		01 113 12
KLF	x	G 1/4 lh M	50 mbar	1.5 kg/h	with pressure gauge	01 113 40
KLF	x	G 1/4 lh M	29 (30) mbar	1.5 kg/h		01 114 18
KLF	x	G 1/4 lh M	29 (30) mbar	1.5 kg/h	with pressure gauge	01 114 40

#### 90° outlet

KLF	x	G 1/4 lh M	50 mbar	0.8 kg/h		01 113 61
KLF	x	G 1/4 lh M	50 mbar	0.8 kg/h	with pressure gauge	01 113 45

#### Accessories

Gas remote switch GSE G 1/4 lh nut x G 1/4 lh M, with LED	10 076 00
---	-----------





## Medium pressure hose assembly corrosion resistant PS 10 bar

Part no.

to connect fittings, consuming appliances and piping

### Approval

- DVGW-tested

### Technical data

- material: connections: brass  
compressive sleeves: stainless steel
- hose assembly: **rubber with textile lining**
- cold-resistant to -30 °C

### Note

- Our hoses for marine applications are supplied with a tag and information about when they should be replaced.

### Medium pressure hose assembly corrosion-resistant hose dimensions 6.3 x 3.5 mm

#### connections: coupling nut x compression fitting

G 1/4 lh nut	x	compr. fit. 8	x	300 mm	04 440 02
G 1/4 lh nut	x	compr. fit. 8	x	400 mm	04 440 01
G 1/4 lh nut	x	compr. fit. 8	x	600 mm	04 440 18
G 1/4 lh nut	x	compr. fit. 8	x	800 mm	04 440 21
G 1/4 lh nut	x	compr. fit. 8	x	1000 mm	04 440 36

#### connections: coupling nut x pipe socket

G 1/4 lh nut	x	pipe socket 8	x	300 mm	04 440 14
G 1/4 lh nut	x	pipe socket 8	x	400 mm	04 440 00
G 1/4 lh nut	x	pipe socket 8	x	600 mm	04 440 19
G 1/4 lh nut	x	pipe socket 8	x	800 mm	04 440 09
G 1/4 lh nut	x	pipe socket 8	x	1000 mm	04 440 08

#### connections: compression fitting x compression fitting

compr. fit. 8	x	compr. fit. 8	x	300 mm	04 440 15
compr. fit. 8	x	compr. fit. 8	x	400 mm	04 440 06
compr. fit. 8	x	compr. fit. 8	x	600 mm	04 440 10
compr. fit. 8	x	compr. fit. 8	x	800 mm	04 440 07
compr. fit. 8	x	compr. fit. 8	x	1000 mm	04 440 11

#### connections: compression fitting x pipe socket

compr. fit. 8	x	pipe socket 8	x	300 mm	04 440 16
compr. fit. 8	x	pipe socket 8	x	400 mm	04 440 03
compr. fit. 8	x	pipe socket 8	x	600 mm	04 440 05
compr. fit. 8	x	pipe socket 8	x	800 mm	04 440 04
compr. fit. 8	x	pipe socket 8	x	1000 mm	04 440 17

#### connections: pipe socket x pipe socket

pipe socket 8	x	pipe socket 8	x	400 mm	04 441 00
pipe socket 8	x	pipe socket 8	x	600 mm	04 441 03
pipe socket 8	x	pipe socket 8	x	800 mm	04 441 02
pipe socket 8	x	pipe socket 8	x	1000 mm	04 441 01

### hose dimensions 9 x 3.5 mm

#### connections: coupling nut x compression fitting

G 1/2 lh nut	x	compr. fit. 12	x	400 mm	04 444 11
--------------	---	----------------	---	--------	-----------

- 30 °C



LPG / GPL  
To be replaced before  
A replacement must 2019



### Leak tester type 4071

enables a quick and sound leak test of the LPG system at the press of a button

#### Advantages and equipment

- with fixing screws
- with reinforcement rings
- including glycol mixture; to test also at temperatures below freezing
- if there is a leak in the LPG system, bubbles appear in the inspection glass

#### Approval

- EC type test according to Gas Appliance Directive

#### Technical data

- maximum operating pressure: 2 bar
- pressure loss: < 1 mbar

#### Note

- It can be installed with all low pressure LPG systems in marine applications!

#### Leak tester type 4071

compr. fit. 8 x compr. fit. 8

Part no.

02 004 71



### Ball valve type 0270 PS 16 bar

for quick opening and closing, shut-off fitting according to EN 12514-2 and EN 331

#### Advantages and equipment

- with mounting bracket

#### Approval

- EC type test according to Gas Appliance Directive

#### Technical data

- material of coupling nut: brass

#### Ball valve type 0270

compression fitting x compression fitting

compr. fit. 8 x compr. fit. 8

compression fitting x male thread

compr. fit. 8 x G 1/4 lh M

coupling nut x male thread

G 1/4 lh nut x G 1/4 lh M

Part no.

02 700 07

02 700 08

02 700 10





### Distributor valve PS 16 bar

quick-action fitting according to DIN 4817-1, only fully open or fully closed setting

#### Advantages and equipment

- including a blind plug
- including stickers

#### Approval

- DIN-DVGW-tested

#### Technical data

- material: brass

#### Distributor valve

design with brass nut and brass olive

compr. fit. 8 x 2 x compr. fit. 8

compr. fit. 8 x 3 x compr. fit. 8

compr. fit. 8 x 4 x compr. fit. 8

#### Accessories

Blind plug 8 mm

Set of symbols

Part no.

03 500 99

03 501 99

03 502 99

03 505 00

03 506 00



### Information about brass compression fittings

For the correct choice and installation of compression fittings, please refer to the GOK installation instructions and the data sheets for compression fittings (at [www.gok-online.de](http://www.gok-online.de) under Downloads / Technical Documentation).

Material: brass (CW 614 N or CW 617 N). All compression fittings are approved by the DVGW.

#### Straight compression fitting brass type G-MS

EN ISO 8434-1 - SC

**Straight compression fitting type G-MS  
with brass olive for copper pipes**  
compr. fit. 8 x compr. fit. 8 series L

Part no.

07 602 00



#### Elbow compression fitting brass type W-MS

EN ISO 8434-1 - EC

**Elbow compression fitting type W-MS  
with brass olive for copper pipes**  
compr. fit. 8 x compr. fit. 8 series L

Part no.

07 608 00



#### T-shape compression fitting brass type T-MS

EN ISO 8434-1 - TC

**T-shape compression fitting type T-MS  
with brass olive for copper pipes**  
compr. fit. 8 x compr. fit. 8 x compr. fit. 8 series L

Part no.

07 614 00



#### Straight bulkhead compression fitting brass type SV-MS

EN ISO 8434-1 - BHSC

**Straight bulkhead compression fitting type SV-MS  
with brass olive for copper pipes**  
compr. fit. 8 x compr. fit. 8 series L

Part no.

07 880 00



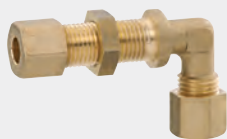
#### Elbow bulkhead compression fitting brass type WSV-MS

EN ISO 8434-1 - BHEC

**Elbow bulkhead compression fitting type WSV-MS  
with brass olive for copper pipes**  
compr. fit. 8 x compr. fit. 8 series L

Part no.

07 681 00





## Information about stainless steel compression fittings

For proper installation of stainless steel compression fittings, we recommend that you use a pre-assembly socket and a lubricant!

For the correct choice and installation of compression fittings, please refer to the GOK installation instructions and the data sheets for compression fittings (at [www.gok-online.de](http://www.gok-online.de) under Downloads / Technical Documentation).

Material: stainless steel (1.4571). All compression fittings are approved by the DVGW.

### Straight compression fitting stainless steel type G-X

EN ISO 8434-1 - SC

**Straight compression fitting type G-X**  
with stainless steel olive for stainless steel pipes  
compr. fit. 8 x compr. fit. 8 series L

Part no.

07 502 00



### Elbow compression fitting stainless steel type W-X

EN ISO 8434-1 - EC

**Elbow compression fitting type W-X**  
with stainless steel olive for stainless steel pipes  
compr. fit. 8 x compr. fit. 8 series L

Part no.

07 508 00



### T-shape compression fitting stainless steel type T-X

EN ISO 8434-1 - TC

**T-shape compression fitting type T-X**  
with stainless steel olive for stainless steel pipes  
compr. fit. 8 x compr. fit. 8 x compr. fit. 8 series L

Part no.

07 514 00



### Leak tester type 150

to check for leaks in LPG systems in vehicles, according to German G 607 consisting of: pressure limiter, test pressure gauge 0 to 250 mbar quality class 1.0 (pressure resistant to 2.5 bar), hand pump, transport case and two adapters G 1/4 lh F x G 3/8 lh M and G 1/4 lh F x G 1/2 lh M

#### Advantages and equipment

- pressure limiter prevents the pressure gauge being damaged

#### Leak tester type 150

with hand pump and transport case  
like 02 611 00, but with 125 ml leak detector spray

Part no.

02 611 00

02 611 01

#### Accessories

Retrofit kit for additional volume 600 cm<sup>3</sup>

02 611 06

Additional volume 600 cm<sup>3</sup>

02 611 40

Hose assembly for connection to pipeline: G 1/4 lh nut x compr. fit. 8 x 400 mm

04 402 00

Test pressure gauge 0-250 mbar, quality class 1.0

02 616 26

Adapter brass G 1/4 lh F x G 3/8 lh M

02 600 32

Adapter brass G 1/4 lh F x G 1/2 lh M

02 600 33

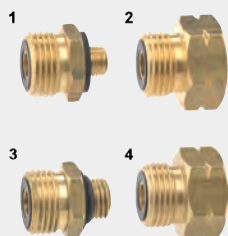
Gasket for outlet G 1/4 lh male thread on leak tester type 150

02 600 59





## Pipe system

**Euro set**

for connecting a pressure regulator with a German connection to gas cylinders with common European connections

**Euro set**

comprising adapters 1 to 4

**Single adapter**

**Adapter 1: Italy, Switzerland**

KLF M (G.12) x M10 x 1 M

**Adapter 2: Greece, Italy, Austria**

KLF M (G.12) x W 20 x 1/14 lh F (G.1)

**Adapter 3: UK, Finland, Iceland, Norway, Portugal, Sweden**

KLF M (G.12) x M14 x 1.5 M (G.32)

**Adapter 4: Belgium, UK, France, Ireland, Croatia, Latvia, Luxembourg, Macedonia, Montenegro, Netherlands, Switzerland, Serbia, Slovakia, Slovenia, Spain, Czech Republic**

KLF M (G.12) x W 21.8 x 1/14 lh F (G.2, G.8)

Packed for self-service

**Euro set**

comprising adapters 1 to 4

Part no.



09 735 00

x x x

09 735 31

x x x

09 735 32

x x x

09 735 33

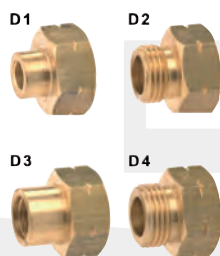
x x x

09 735 34

x x x

09 735 70

x x x

**Euro filling set D**

for filling German gas cylinders through authorised European filling stations

**Euro filling set D**

comprising filling adapters D1 to D4

**Single adapter**

**Filling adapter D1: Italy, Switzerland**

KLF F (G.12) x M10 x 1 F

**Filling adapter D2: Greece, Italy, Austria**

KLF F (G.12) x W 20 x 1/14 lh M (G.1)

**Filling adapter D3: UK, Finland, Iceland, Norway, Portugal, Sweden**

KLF F (G.12) x M14 x 1.5 F (G.32)

**Filling adapter D4: Belgium, UK, France, Ireland, Croatia, Latvia, Luxembourg, Macedonia, Montenegro, Netherlands, Switzerland, Serbia, Slovakia, Slovenia, Spain, Czech Republic**

KLF F (G.12) x W 21.8 x 1/14 lh M (G.2, G.8)

Packed for self-service

**Euro filling set D**

comprising filling adapters D1 to D4

Part no.



09 738 00

x x x

09 738 31

x x x

09 738 32

x x x

09 738 33

x x x

09 738 34

x x x

09 738 70

x x x

# Pipe system



## Euro adapter

for connecting a pressure regulator with a German connection to gas cylinders used in Scandinavia and the UK

### Euro adapter for Scandinavia

KLF M (G.12) x POL M (G.9)

KLF M (G.12) x POL soft with wing screw M (G.10)

### for the UK

KLF M (G.12) x British POL M (G.7)

Part no.



02 504 00

x x x

02 504 02

x x x

02 504 01

x x x



## Adapter international

for connecting a pressure regulator with POL connection to a German gas cylinder with a maximum filling weight of 14 kg

### Adapter international

KLF nut (G.12) x POL F (G.9)

Part no.



09 727 00

x x x

## Click-on adapter

for connecting a pressure regulator with a German connection to gas cylinders with click-on connection

### Advantages and equipment

- integrated shut-off valve
- the shut-off valve can be opened and closed only when the adapter is connected

### Click-on adapter model 21 mm

for Denmark, UK, Ireland

click-on (G.53) x KLF M (G.12)

### model JUMBO 35 mm

for Denmark, UK, Finland, France, Ireland, Portugal, Scandinavia, Spain, Cyprus

click-on (G.56) x KLF M (G.12)

Part no.



20 036 30

x x x

20 036 35

x x x

## Sealing screw

to protect the female thread of the coupling nut on pressure regulators that are not installed on the cylinder valve

### Advantages and equipment

- with fastening clip

### Technical data

- material: plastic
- male thread: W 21.8 x 1/14 lh

### Note

- The sealing screw must not be used on regulators with a gas backflow prevention, such as DuoControl!

### Sealing screw

for small cylinder, large cylinder and Kombi coupling nuts

Part no.



55 300 92

x x x

## Pipe system



## Adapter

for use in piping and fittings

## Adapter

Figure 1, e.g. for gas tanks firmly installed on a vehicle

1/2 UNF F x pipe socket 8

02 523 00

x x x

Figure 2, pipe socket 8 mm with assembled nut and olive

pipe socket 8 x pipe socket 8 x 50 mm

02 524 00

x x

## Figure 3

G 1/4 lh M x pipe socket 8

14 040 00

x x

Figure 4, pipe socket 8 mm with assembled nut and olive

G 1/4 lh nut x pipe socket 8

04 047 00

x x

Figure 5, pipe socket 8 mm 90° installed with assembled nut and olive

G 1/4 lh nut x pipe socket 8 90°

04 046 00

x x

Figure 6, e.g. for gas tanks firmly installed on a vehicle

1/2 UNF F x compr. fit. 8

02 527 00

x x

## Figure 7

G 1/4 lh M x G 1/4 lh M

14 013 00

x x

## Figure 8, adapter 90°

G 1/4 lh nut x G 1/4 lh M

04 048 00

x x x

## Figure 9

pipe socket 8 x compr. fit. 10 series L

02 082 00

x x

Packed for self-service

## Adapter

## Figure 3

G 1/4 lh M x pipe socket 8

14 040 70

x x

## Figure 7

G 1/4 lh M x G 1/4 lh M

14 013 70

x x

# Pipe system



## Medium pressure hose assembly rubber PS 10 bar

to connect fittings, consuming appliances and piping

### Approval

- DVGW-tested

### Technical data

- hose assembly: rubber with textile lining
- cold-resistant to -30°C

### Medium pressure hose assembly rubber hose dimensions 6.3 x 3.5 mm

#### connections: coupling nut x compression fitting

G 1/4 lh nut	x	compr. fit.	8	x	300 mm
G 1/4 lh nut	x	compr. fit.	8	x	400 mm
G 1/4 lh nut	x	compr. fit.	8	x	450 mm
G 1/4 lh nut	x	compr. fit.	8	x	500 mm
G 1/4 lh nut	x	compr. fit.	8	x	600 mm
G 1/4 lh nut	x	compr. fit.	8	x	750 mm
G 1/4 lh nut	x	compr. fit.	8	x	800 mm
G 1/4 lh nut	x	compr. fit.	8	x	1000 mm
G 1/4 lh nut	x	compr. fit.	8	x	1500 mm
G 1/4 lh nut	x	compr. fit.	8	x	2000 mm
G 1/4 lh nut	x	compr. fit.	8	x	3000 mm
G 1/4 lh nut	x	compr. fit.	8	x	5000 mm
G 1/4 lh nut	x	compr. fit.	10	x	300 mm
G 1/4 lh nut	x	compr. fit.	10	x	400 mm
G 1/4 lh nut	x	compr. fit.	10	x	750 mm
G 1/4 lh nut	x	compr. fit.	10	x	1000 mm
G 1/4 lh nut	x	compr. fit.	10	x	2000 mm
G 1/4 lh nut	x	compr. fit.	10	x	3000 mm

#### connections: coupling nut x pipe socket

G 1/4 lh nut	x	pipe socket	8	x	300 mm
G 1/4 lh nut	x	pipe socket	8	x	400 mm
G 1/4 lh nut	x	pipe socket	8	x	800 mm
G 1/4 lh nut	x	pipe socket	8	x	1000 mm
G 1/4 lh nut	x	pipe socket	8	x	1500 mm
G 1/4 lh nut	x	pipe socket	8	x	2000 mm

#### connections: coupling nut x coupling nut

G 1/4 lh nut	x	G 1/4 lh nut	x	400 mm
G 1/4 lh nut	x	G 1/4 lh nut	x	800 mm
G 1/4 lh nut	x	G 1/4 lh nut	x	1000 mm
G 1/4 lh nut	x	G 1/4 lh nut	x	1500 mm
G 1/4 lh nut	x	G 1/4 lh nut	x	2000 mm
G 1/4 lh nut	x	G 1/4 lh nut	x	3000 mm
G 1/4 lh nut	x	G 1/4 lh nut	x	5000 mm

Part no.



04 401 00	x	x
04 402 00	x	x
04 401 02	x	x
04 403 00	x	x
04 404 00	x	x
04 405 01	x	x
04 405 00	x	
04 406 00	x	
04 408 00	x	
04 422 00	x	
04 410 00	x	
04 423 00	x	
04 413 00	x	
04 409 00	x	x
04 409 03	x	x
04 409 07	x	x
04 409 02	x	
04 409 04	x	
04 409 01	x	
04 436 01	x	x
04 436 02	x	x
04 436 09	x	
04 436 00	x	
04 436 06	x	
04 436 10	x	
04 454 02	x	
04 407 00	x	
04 454 00	x	
04 455 00	x	
04 456 00	x	
04 457 00	x	
04 457 01	x	



# Pipe system

- 30 °C



- 30 °C



- 30 °C



- 30 °C



## Medium pressure hose assembly rubber PS 10 bar

connections: coupling nut x plug-in fitting

G 1/4 lh nut	x	plug-in fitting	x	300 mm
G 1/4 lh nut	x	plug-in fitting	x	400 mm
G 1/4 lh nut	x	plug-in fitting	x	800 mm
G 1/4 lh nut	x	plug-in fitting	x	1000 mm
G 1/4 lh nut	x	plug-in fitting	x	1500 mm
G 1/4 lh nut	x	plug-in fitting	x	2000 mm
G 1/4 lh nut	x	plug-in fitting	x	2500 mm
G 1/4 lh nut	x	plug-in fitting	x	3000 mm
G 1/4 lh nut	x	plug-in fitting	x	5000 mm

Packed for self-service

Medium pressure hose assembly rubber  
hose dimensions 6.3 x 3.5 mm

connections: coupling nut x compression fitting

G 1/4 lh nut	x	compr. fit. 8	x	300 mm
G 1/4 lh nut	x	compr. fit. 8	x	400 mm
G 1/4 lh nut	x	compr. fit. 8	x	500 mm
G 1/4 lh nut	x	compr. fit. 8	x	600 mm
G 1/4 lh nut	x	compr. fit. 8	x	800 mm
G 1/4 lh nut	x	compr. fit. 8	x	1000 mm
G 1/4 lh nut	x	compr. fit. 8	x	1500 mm
G 1/4 lh nut	x	compr. fit. 8	x	2000 mm
G 1/4 lh nut	x	compr. fit. 8	x	2500 mm
G 1/4 lh nut	x	compr. fit. 8	x	3000 mm
G 1/4 lh nut	x	compr. fit. 8	x	5000 mm

connections: coupling nut x coupling nut

G 1/4 lh nut	x	G 1/4 lh nut	x	800 mm
G 1/4 lh nut	x	G 1/4 lh nut	x	1000 mm
G 1/4 lh nut	x	G 1/4 lh nut	x	1500 mm
G 1/4 lh nut	x	G 1/4 lh nut	x	2000 mm
G 1/4 lh nut	x	G 1/4 lh nut	x	3000 mm

connections: coupling nut x plug-in fitting

G 1/4 lh nut	x	plug-in fitting	x	400 mm
G 1/4 lh nut	x	plug-in fitting	x	1500 mm

## Medium pressure hose assembly rubber PS 10 bar

to connect fittings with a gas BBQ, such as from the Outdoorchef series

Technical data

- hose assembly: rubber with textile lining
- cold-resistant to -30°C

Medium pressure hose assembly rubber  
hose dimensions 6.3 x 3.5 mm

connections: coupling nut x coupling nut

G 1/4 lh nut	x	5/8 UNF nut	x	600 mm
G 1/4 lh nut	x	5/8 UNF nut	x	800 mm
G 1/4 lh nut	x	5/8 UNF nut	x	1000 mm

Part no.			
04 220 00	x	x	
04 221 00	x	x	
04 222 00	x		
04 223 00	x		
04 224 00	x		
04 225 00	x		
04 226 00	x		
04 227 00	x		
04 227 05	x		
04 401 65	x	x	
04 402 65	x	x	
04 403 65	x	x	
04 404 65	x	x	
04 405 65	x		
04 406 65	x		
04 408 65	x		
04 422 65	x		
04 410 65	x		
04 423 65	x		
04 413 65	x		
04 407 65	x		
04 454 65	x		
04 455 65	x		
04 456 65	x		
04 457 65	x		
04 221 65	x	x	
04 224 65	x	x	

Part no.			
04 508 01	x		
04 508 04	x		
04 508 10			

## Pipe system



## Medium pressure hose assembly plastic PS 10 bar

to connect fittings, consuming appliances and piping

## Approval

- DVGW-tested

## Technical data

- hose assembly: plastic with textile lining

Medium pressure hose assembly plastic  
hose dimensions 6.3 x 3.5 mm

connections: coupling nut x compression fitting

G 1/4 lh nut	x	compr. fit.	8	x	300 mm
G 1/4 lh nut	x	compr. fit.	8	x	400 mm
G 1/4 lh nut	x	compr. fit.	8	x	450 mm
G 1/4 lh nut	x	compr. fit.	8	x	500 mm
G 1/4 lh nut	x	compr. fit.	8	x	600 mm
G 1/4 lh nut	x	compr. fit.	8	x	800 mm
G 1/4 lh nut	x	compr. fit.	8	x	1000 mm
G 1/4 lh nut	x	compr. fit.	8	x	1500 mm
G 1/4 lh nut	x	compr. fit.	8	x	2000 mm
G 1/4 lh nut	x	compr. fit.	8	x	2500 mm
G 1/4 lh nut	x	compr. fit.	8	x	3000 mm
G 1/4 lh nut	x	compr. fit.	8	x	5000 mm
G 1/4 lh nut	x	compr. fit.	10	x	400 mm
G 1/4 lh nut	x	compr. fit.	10	x	800 mm
G 1/4 lh nut	x	compr. fit.	10	x	1000 mm

connections: coupling nut x coupling nut

G 1/4 lh nut	x	G 1/4 lh nut	x	400 mm
G 1/4 lh nut	x	G 1/4 lh nut	x	800 mm
G 1/4 lh nut	x	G 1/4 lh nut	x	1000 mm
G 1/4 lh nut	x	G 1/4 lh nut	x	1500 mm
G 1/4 lh nut	x	G 1/4 lh nut	x	2000 mm
G 1/4 lh nut	x	G 1/4 lh nut	x	3000 mm
G 1/4 lh nut	x	G 1/4 lh nut	x	5000 mm

connections: coupling nut x male thread

G 1/4 lh nut	x	G 1/4 lh M	x	2000 mm
G 1/4 lh nut	x	G 1/4 lh M	x	3000 mm

Part no.



04 401 30	x	x
04 402 30	x	x
04 401 27	x	x
04 403 30	x	x
04 404 30	x	x
04 405 30	x	
04 406 30	x	
04 408 30	x	
04 422 30	x	
04 410 30	x	
04 423 30	x	
04 413 30	x	
04 409 31	x	x
04 409 33	x	
04 409 35	x	
04 454 34	x	x
04 407 30	x	
04 454 30	x	
04 455 30	x	
04 456 30	x	
04 457 30	x	
04 458 30	x	
04 660 00		
04 661 00		

# Pipe system

## Medium pressure hose assembly plastic PS 10 bar

Part no.



Packed for self-service

Medium pressure hose assembly plastic  
hose dimensions 6.3 x 3.5 mm

connections: coupling nut x compression fitting

G 1/4 lh nut x compr. fit. 8 x 300 mm

G 1/4 lh nut x compr. fit. 8 x 400 mm

G 1/4 lh nut x compr. fit. 8 x 500 mm

G 1/4 lh nut x compr. fit. 8 x 600 mm

G 1/4 lh nut x compr. fit. 8 x 800 mm

G 1/4 lh nut x compr. fit. 8 x 1000 mm

G 1/4 lh nut x compr. fit. 8 x 1500 mm

G 1/4 lh nut x compr. fit. 8 x 2000 mm

G 1/4 lh nut x compr. fit. 8 x 2500 mm

G 1/4 lh nut x compr. fit. 8 x 3000 mm

connections: coupling nut x coupling nut

G 1/4 lh nut x G 1/4 lh nut x 800 mm

G 1/4 lh nut x G 1/4 lh nut x 1000 mm

G 1/4 lh nut x G 1/4 lh nut x 1500 mm

G 1/4 lh nut x G 1/4 lh nut x 2000 mm

G 1/4 lh nut x G 1/4 lh nut x 3000 mm

04 401 70

x

x

04 402 70

x

x

04 403 70

x

x

04 404 70

x

x

04 405 70

x

04 406 70

x

04 408 70

x

04 422 70

x

04 410 70

x

04 423 70

x

04 407 70

x

04 454 70

x

04 455 70

x

04 456 70

x

04 457 70

x



# Pipe system



## Medium pressure hose assembly corrosion resistant PS 10 bar

to connect fittings, consuming appliances and piping

### Approval

- DVGW-tested

### Technical data

- material: connections: brass  
compressive sleeves: stainless steel
- hose assembly: **rubber with textile lining**
- cold-resistant to -30 °C

### Note

- Our hoses for marine applications are supplied with a tag and information about when they should be replaced.

### Medium pressure hose assembly corrosion-resistant hose dimensions 6.3 x 3.5 mm

#### connections: coupling nut x compression fitting

G 1/4 lh nut	x	compr. fit. 8	x	300 mm	04 440 02	x	x	x
G 1/4 lh nut	x	compr. fit. 8	x	400 mm	04 440 01	x	x	x
G 1/4 lh nut	x	compr. fit. 8	x	600 mm	04 440 18	x	x	x
G 1/4 lh nut	x	compr. fit. 8	x	800 mm	04 440 21	x		x
G 1/4 lh nut	x	compr. fit. 8	x	1000 mm	04 440 36	x		x

#### connections: coupling nut x pipe socket

G 1/4 lh nut	x	pipe socket 8	x	300 mm	04 440 14	x	x	x
G 1/4 lh nut	x	pipe socket 8	x	400 mm	04 440 00	x	x	x
G 1/4 lh nut	x	pipe socket 8	x	600 mm	04 440 19	x	x	x
G 1/4 lh nut	x	pipe socket 8	x	800 mm	04 440 09	x		x
G 1/4 lh nut	x	pipe socket 8	x	1000 mm	04 440 08	x		x

#### connections: compression fitting x compression fitting

compr. fit. 8	x	compr. fit. 8	x	300 mm	04 440 15	x	x	x
compr. fit. 8	x	compr. fit. 8	x	400 mm	04 440 06	x	x	x
compr. fit. 8	x	compr. fit. 8	x	600 mm	04 440 10	x	x	x
compr. fit. 8	x	compr. fit. 8	x	800 mm	04 440 07	x		x
compr. fit. 8	x	compr. fit. 8	x	1000 mm	04 440 11	x		x

#### connections: compression fitting x pipe socket

compr. fit. 8	x	pipe socket 8	x	300 mm	04 440 16	x	x	x
compr. fit. 8	x	pipe socket 8	x	400 mm	04 440 03	x	x	x
compr. fit. 8	x	pipe socket 8	x	600 mm	04 440 05	x	x	x
compr. fit. 8	x	pipe socket 8	x	800 mm	04 440 04	x		x
compr. fit. 8	x	pipe socket 8	x	1000 mm	04 440 17	x		x

#### connections: pipe socket x pipe socket

pipe socket 8	x	pipe socket 8	x	400 mm	04 441 00	x	x	x
pipe socket 8	x	pipe socket 8	x	600 mm	04 441 03	x	x	x
pipe socket 8	x	pipe socket 8	x	800 mm	04 441 02	x		x
pipe socket 8	x	pipe socket 8	x	1000 mm	04 441 01	x		x

#### hose dimensions 9 x 3.5 mm

#### connections: coupling nut x compression fitting

G 1/2 lh nut	x	compr. fit. 12	x	400 mm	04 444 11			x
--------------	---	----------------	---	--------	-----------	--	--	---



- 30 °C

LPG / GPL  
To be replaced before  
A replacement must 2019

## Pipe system



version V



version K MS

## Quick-acting stop valve

quick acting fitting, only completely open or closed setting

## Approval

- version V, PS 40 bar
- EC type approval according to PED
- version K, PS 16 bar

## Quick-acting stop valve

type V, brass chrome-plated

compr. fit. 8 x compr. fit. 8

compr. fit. 10 x compr. fit. 10

type K, brass chrome-plated

compr. fit. 8 x compr. fit. 8

compr. fit. 10 x compr. fit. 10

type K MS, brass polished

compr. fit. 8 x compr. fit. 8 with mounting bracket

compr. fit. 10 x compr. fit. 10

Packed for self-service

## Quick-acting stop valve

type K MS, brass polished

compr. fit. 8 x compr. fit. 8 with mounting bracket

compr. fit. 10 x compr. fit. 10

Part no.



03 202 00

x x x

03 204 00

x x x

03 401 00

x x x

03 402 00

x x x

03 403 00

x x x

03 404 00

x x x

03 403 70

x x x

03 404 70

x x x



version K



version K

## Quick-acting stop valve

quick acting fitting, only completely open or closed setting

## Approval

- version K, PS 16 bar
- EC type approval according to PED

## Quick-acting stop valve

type K 8-Z 8

brass, chrome-plated

pipe socket 8 x compr. fit. 8

brass, polished

pipe socket 8 x compr. fit. 8

Packed for self-service

## Quick-acting stop valve

type K 8-Z 8

brass, polished

pipe socket 8 x compr. fit. 8

Part no.



03 411 00

x x x

03 410 00

x x x

03 410 70

x x x



## Fastening clamp

to fasten a quick-acting stop valve or control valve

## Technical data

- material: chrome-plated

## Fastening clamp

17 mm, for valves 6, 8 and 10 mm

Part no.



03 230 00

x x x

# Pipe system



## Information about compression fittings

For the correct choice and installation of compression fittings, please refer to the GOK installation instructions and the data sheets for compression fittings (at [www.gok-online.de](http://www.gok-online.de) under Downloads / Technical Documentation).

If you are installing compression fittings with copper or aluminium pipe, you must use a reinforcement ring!

For aluminium pipe, use a steel reinforcement ring!

All compression fittings are approved by the DVGW.



## Straight compression fitting type G

EN ISO 8434-1 - SC

### Straight compression fitting type G

with steel olive for steel pipes

compr. fit. 8 x compr. fit. 8 series L

compr. fit. 10 x compr. fit. 10 series L

Packed for self-service

### Straight compression fitting type G

with steel olive for steel pipes

compr. fit. 8 x compr. fit. 8 series L

compr. fit. 10 x compr. fit. 10 series L

Part no.



07 702 00

07 703 00

07 702 70

07 703 70

x

x

x

x

## Elbow compression fitting type W

EN ISO 8434-1 - EC

### Elbow compression fitting type W

with steel olive for steel pipes

compr. fit. 8 x compr. fit. 8 series L

compr. fit. 10 x compr. fit. 10 series L

Packed for self-service

### Elbow compression fitting type W

with steel olive for steel pipes

compr. fit. 8 x compr. fit. 8 series L

compr. fit. 10 x compr. fit. 10 series L

Part no.



07 708 00

07 709 00

07 708 70

07 709 70

x

x

x

x

## T-shape compression fitting type T

EN ISO 8434-1 - TC

### T-shape compression fitting type T

with steel olive for steel pipes

compr. fit. 8 x compr. fit. 8 x compr. fit. 8 series L

compr. fit. 10 x compr. fit. 10 x compr. fit. 10 series L

Packed for self-service

### T-shape compression fitting type T

with steel olive for steel pipes

compr. fit. 8 x compr. fit. 8 x compr. fit. 8 series L

compr. fit. 10 x compr. fit. 10 x compr. fit. 10 series L

Part no.



07 714 00

07 715 00

07 714 70

07 715 70

x

x

x

x



# Pipe system



## Straight reducing compression fitting type GR

EN ISO 8434-1 - RDSC

**Straight reducing compression fitting type GR  
with steel olive for steel pipes**

compr. fit. 10 x compr. fit. 8 series L

Packed for self-service

**Straight reducing compression fitting type GR  
with steel olive for steel pipes**

compr. fit. 10 x compr. fit. 8 series L

Part no.



07 727 00

x x

07 727 70

x x



## Elbow reducing compression fitting type WR

EN ISO 8434-1 - RDEC

**Elbow reducing compression fitting type WR  
with steel olive for steel pipes**

compr. fit. 10 x compr. fit. 8 series L

Part no.



07 734 00

x x



## T-shape reducing compression fitting type TR

EN ISO 8434-1 - RDBTC or RDRTC

**T-shape reducing compression fitting type TR  
with steel olive for steel pipes**

compr. fit. 8 x compr. fit. 10 x compr. fit. 8 series L

compr. fit. 10 x compr. fit. 8 x compr. fit. 10 series L

Part no.



07 748 00

x x

07 763 00

x x



## Straight screw-in compression fitting conical type GERK

DIN 2353 - type B with screwed plug DIN 3852-2 type C

### Note

- Screw connections with conical male thread R for cylindrical female threads Rp may be used only with elements made from suitably ductile materials (e.g. steel, Cu-Zn or Al wrought alloys).

**Straight screw-in compression fitting conical type GERK  
with steel olive for steel pipes**

compr. fit. 8 x R 1/2 M series L

Part no.



07 794 00

x x



## Elbow screw-in compression fitting conical type WERK

DIN 2353 - type G with screwed plug DIN 3852-2 type C

### Note

- Screw connections with conical male thread R for cylindrical female threads Rp may be used only with elements made from suitably ductile materials (e.g. steel, Cu-Zn or Al wrought alloys).

**Elbow screw-in compression fitting conical type WERK  
with steel olive for steel pipes**

compr. fit. 8 x R 1/2 M series L

Part no.



07 051 00

x x

# Pipe system



## Straight screw-on compression fitting type GAI

one side compression fitting, other side female pipe thread tapped hole  
DIN 3852-2 - type Y without counterbore

### Straight screw-on compression fitting type GAI with steel olive for steel pipes

compr. fit. 8 x G 1/2 F series L

Packed for self-service

### Straight screw-on compression fitting type GAI with steel olive for steel pipes

compr. fit. 8 x G 1/2 F series L

Part no.



07 768 00

x x

07 768 70

x x



## Elbow screw-on compression fitting type WAI

one side female pipe thread tapped hole DIN 3852-2 - type Y without counterbore, other side compression fitting

### Elbow screw-on compression fitting type WAI with steel olive for steel pipes

G 1/2 F x compr. fit. 8 series L

Packed for self-service

### Elbow screw-on compression fitting type WAI with steel olive for steel pipes

G 1/2 F x compr. fit. 8 series L

Part no.



07 780 00

x x

07 780 70

x x



## Straight reducer insert type RED

connection reducer fitting based on EN ISO 8434-1, one side pipe socket with outer diameter, other side compression fitting

### Straight reducer insert type RED with steel olive for steel pipes

pipe socket 8 x compr. fit. 10 series L

pipe socket 10 x compr. fit. 8 series L

Part no.



02 082 00

x x

07 223 00

x x



## Adjustable elbow compression fitting type EVW

screw connection with adjustable direction based on EN ISO 8434-1, one side compression fitting, other side pipe socket with outer diameter, 90° elbow

### Adjustable elbow compression fitting type EVW with steel olive for steel pipes

compr. fit. 8 x pipe socket 8 series L

compr. fit. 10 x pipe socket 10 series L

Part no.



07 872 00

x x

07 873 00

x x

# Pipe system



## Straight bulkhead compression fitting type SV

EN ISO 8434-1 - BHSC

### Straight bulkhead compression fitting type SV with steel olive for steel pipes

compr. fit. 8 x compr. fit. 8 series L

compr. fit. 10 x compr. fit. 10 series L

Part no.



07 354 00

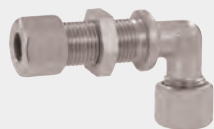
x

x

07 355 00

x

x



## Elbow bulkhead compression fitting type WSV

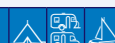
EN ISO 8434-1 - BHEC

### Elbow bulkhead compression fitting type WSV with steel olive for steel pipes

compr. fit. 8 x compr. fit. 8 series L

compr. fit. 10 x compr. fit. 10 series L

Part no.



07 371 00

x

x

07 372 00

x

x

# Pipe system



## Information about brass compression fittings

For the correct choice and installation of compression fittings, please refer to the GOK installation instructions and the data sheets for compression fittings (at [www.gok-online.de](http://www.gok-online.de) under Downloads / Technical Documentation).

Material: brass (CW 614 N or CW 617 N). All compression fittings are approved by the DVGW.



### Straight compression fitting brass type G-MS

EN ISO 8434-1 - SC

**Straight compression fitting type G-MS  
with brass olive for copper pipes**  
compr. fit. 8 x compr. fit. 8 series L

Part no.

07 602 00



x

x



### Elbow compression fitting brass type W-MS

EN ISO 8434-1 - EC

**Elbow compression fitting type W-MS  
with brass olive for copper pipes**  
compr. fit. 8 x compr. fit. 8 series L

Part no.

07 608 00



x

x



### T-shape compression fitting brass type T-MS

EN ISO 8434-1 - TC

**T-shape compression fitting type T-MS  
with brass olive for copper pipes**  
compr. fit. 8 x compr. fit. 8 x compr. fit. 8 series L

Part no.

07 614 00



x

x



### Straight bulkhead compression fitting brass type SV-MS

EN ISO 8434-1 - BHSC

**Straight bulkhead compression fitting type SV-MS  
with brass olive for copper pipes**  
compr. fit. 8 x compr. fit. 8 series L

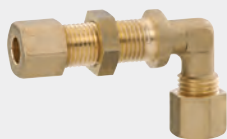
Part no.

07 880 00



x

x



### Elbow bulkhead compression fitting brass type WSV-MS

EN ISO 8434-1 - BHEC

**Elbow bulkhead compression fitting type WSV-MS  
with brass olive for copper pipes**  
compr. fit. 8 x compr. fit. 8 series L

Part no.

07 681 00



x

x



# Pipe system



## Information about stainless steel compression fittings

For proper installation of stainless steel compression fittings, we recommend that you use a pre-assembly socket and a lubricant!

For the correct choice and installation of compression fittings, please refer to the GOK installation instructions and the data sheets for compression fittings (at [www.gok-online.de](http://www.gok-online.de) under Downloads / Technical Documentation).

Material: stainless steel (1.4571). All compression fittings are approved by the DVGW.

### Straight compression fitting stainless steel type G-X

EN ISO 8434-1 - SC

**Straight compression fitting type G-X**  
with stainless steel olive for stainless steel pipes

compr. fit. 8 x compr. fit. 8 series L

compr. fit. 10 x compr. fit. 10 series L

Part no.



07 502 00

x x x

07 503 00

x x x

### Elbow compression fitting stainless steel type W-X

EN ISO 8434-1 - EC

**Elbow compression fitting type W-X**  
with stainless steel olive for stainless steel pipes

compr. fit. 8 x compr. fit. 8 series L

compr. fit. 10 x compr. fit. 10 series L

Part no.



07 508 00

x x x

07 509 00

x x x

### T-shape compression fitting stainless steel type T-X

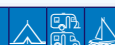
EN ISO 8434-1 - TC

**T-shape compression fitting type T-X**  
with stainless steel olive for stainless steel pipes

compr. fit. 8 x compr. fit. 8 x compr. fit. 8 series L

compr. fit. 10 x compr. fit. 10 x compr. fit. 10 series L

Part no.



07 514 00

x x x

07 515 00

x x x

### Pre-assembly socket

when assembling stainless steel compression fittings, pre-assembly should be done only in the hardened pre-assembly socket

Use lubricant for pre-assembly. Steel and brass compression fittings can also be pre-assembled in the pre-assembly socket.

#### Technical data

- material: steel, hardened

#### Pre-assembly socket

8 M 14 x 1.5 M

10 M 16 x 1.5 M

Part no.



07 599 08

x x x

07 599 10

x x x

### Lubricant

for pre-assembly and final assembly of stainless steel compression fittings

#### Lubricant

tube 100 g

Part no.



07 599 50

x x x



# Pipe system



## Coupling nut type M

for compression fittings acc. to DIN 2353 / EN ISO 8434-1,  
acc. to DIN 3870 series LL and acc. to EN ISO 8434-1 - N

### Coupling nut type M

8 M 14 x 1.5 F series L spanner size 17  
10 M 16 x 1.5 F series L spanner size 19

Part no.



07 108 00

x x

07 109 00

x x



## Coupling nut brass type M-MS

for compression fittings acc. to DIN 2353 / EN ISO 8434-1,  
acc. to DIN 3870 series L and acc. to EN ISO 8434-1 - abbreviation N

### Technical data

• material: brass

### Coupling nut brass type M-MS

8 M 14 x 1.5 F series L  
10 M 16 x 1.5 F series L

Part no.



07 108 05

x

x

07 109 05

x

x



## Coupling nut stainless steel type M-X

for compression fittings acc. to DIN 2353 / EN ISO 8434-1 and  
EN ISO 8434-1 - N

### Technical data

• material: stainless steel

### Coupling nut stainless steel type M-X

8 M 14 x 1.5 F series L  
10 M 16 x 1.5 F series L

Part no.



07 551 00

x

x

x

07 552 00

x

x

x



## Olive type D

DIN 3861 - type A-St

### Technical data

• material: steel, hardened

### Olive type D

8 series L  
10 series L

Part no.



07 151 00

x

x

07 152 00

x

x



## Olive brass type D-MS

DIN 3861 - type A-MS, e.g. for installing copper pipe

### Technical data

• material: brass

### Note

• Maximum permitted pressure according to compression fitting data sheet.

### Olive brass type D-MS

8 series L  
10 series L

Part no.



07 171 00

x

x

x

07 172 00

x

x

x

# Pipe system



## Olive stainless steel type D-X

DIN 3861 - type A-V

### Technical data

- material: stainless steel

### Olive stainless steel type D-X

8 series L

10 series L

Part no.



07 551 01

07 552 01

X X X  
X X X

## Blind plug for distributor valve

to block pipes

### Technical data

- material: brass

### Note

- Can only be used with coupling nut!

### Blind plug for distributor valve

8

10

Part no.



03 505 00

03 515 00

X X X  
X X X

## Blind nut type BM

for connections acc. to EN 560

### Advantages and equipment

- with rubber gasket

### Blind nut type BM

1/4 lh nut

Part no.



04 002 05

X X

## Blind plug with coupling nut type BSL

sealing plug with O-ring acc. to EN ISO 8434-1 - PL with coupling nut acc. to EN ISO 8434-1 - N for compression fittings acc. to DIN 2353 / EN ISO 8434-1

### Advantages and equipment

- tight sealing of pipe
- blind plug cannot be lost

### Blind plug with coupling nut type BSL

8 M 14 x 1.5 F series L material: brass

10 M 16 x 1.5 F series L material: brass

Part no.



07 191 10

07 192 10

X X  
X X

## Reinforcement ring

for thin-walled pipes or soft pipe materials, such as copper pipes, in compression and clamping ring fittings according to pr EN 12514-4

### Note

- Installation of copper pipes with reinforcement rings in an LPG system in Germany is permitted only for caravan and marine applications!

### Reinforcement ring

material: brass

for outer pipe diameter x wall thickness in mm

8 x 1

10 x 1

Part no.



08 093 00

08 094 00

X X X  
X X X



# Pipe system



## Seamless precision steel pipe

for piping in systems with liquid and gaseous media  
according to EN 10305-4, seamless, cold-drawn, available in fixed lengths of 5 m

Operating media:

- flammable, highly flammable and extremely flammable as well as non-flammable and water-endangering liquids (TRbF 50, DIN 4755, TRÖI, Building Rules List A Part 1 of DIBt No. 15.41 and 15.27, TRwS 780-1)
- liquefied gas acc. to DIN 51622 and EN 589 (gas and liquid phase)
- for hydraulic and pneumatic applications

The seamless precision steel pipe meets the requirements of:

- Pressure Equipment Directive 97/23/EC
- AD 2000 Leaflets HP 100R and W 4
- for pipes acc. to EN 10305-4 for compression fittings acc. to EN ISO 8434-1

### Technical data

- technical delivery conditions acc. to EN 10305-4, steel type E235+N (normal annealed in delivery condition), material number: 1.0308
- dimensions and tolerances acc. to EN 10305-4, if required, with acceptance inspection certificate 3.1 acc. to EN 10204
- surface design: galvanic zinc coat acc. to EN 50961, layer thickness  $8 \div 12 \mu\text{m}$  and with Cr-6-free passivation
- minimum and maximum temperature TS:  $0^\circ\text{C}$  to  $+300^\circ\text{C}$

### Note

- The maximum permitted pressure PS (at  $+20^\circ\text{C}$ ) acc. to EN 13480-3 is specified in the table of products as case 1 and case 2:  
case 1 ( $c_0 = 0 \text{ mm}$ ), e.g. for LPG  
case 2 ( $c_0 = 1 \text{ mm}$ ), e.g. for fuel oil  
( $c_0$  = wear allowance for corrosion)

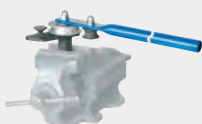
### Seamless precision steel pipe outer pipe diameter x wall thickness in mm

8 x 1.0	packaging unit	125 m	case 1: 360 bar	case 2: --	06 002 00	x	x
8 x 1.5	packaging unit	125 m	case 1: 603 bar	case 2: 152 bar	06 003 00	x	x
10 x 1.0	packaging unit	85 m	case 1: 285 bar	case 2: --	06 004 00	x	x
10 x 1.5	packaging unit	85 m	case 1: 459 bar	case 2: 117 bar	06 005 00	x	x

No liability assumed for the specifications for maximum permitted pressure!

Minimum order: 1 packaging unit (also mixed)

Part no.



## Pipe bending device

with 6 replaceable bending rollers with outer diameter 6 to 18 mm

### Note

- Deviating models, e.g. 20, 22 and 25 mm on request.

### Pipe bending device

design 6 to 18 mm

Part no.



06 500 00

# Pipe system



## Steel pipe coated

for piping in LPG systems

### Advantages and equipment

- welded, cold-drawn

### Technical data

- technical delivery conditions acc. to EN 10305:2003-02, annealed in delivery condition (+A)
- material: steel type E195, material no. 1.0034
- surface design: PVF paint coating (PolyVinylFluoride) minimum thickness 15 µm, corrosion resistance ISO 9227: salt spray test 500 h
- operating media: LPG acc. to DIN 51622 and EN 589
- meets the requirements for pipes:
  - for piping within the scope of EN 1949 for caravans and motor caravans
  - acc. to EN 10305-2 for compression fittings

### Note

- The coated steel pipe can be delivered only in lengths of 3 metres.

### Steel pipe coated

outer pipe diameter x wall thickness in mm

8 x 1.0 fixed length: 3 m packaging unit: 150 m

Part no.



06 102 00

x x



## Pipe clamp metal

to fasten pipes to the wall

### Advantages and equipment

- with rubber profile

### Pipe clamp metal

8

10

Part no.



08 034 01

08 035 01

x x x

x x x

## Leak detector spray

allows safe and reliable leak testing in pipe systems

### Approval

- DIN-DVGW-tested

### Note

- Because of the German Hazardous Goods Ordinance, we can only deliver the following number of items per package:
  - Leak detector spray 125 ml part no. 02 601 01 / 72 cans
  - Leak detector spray 400 ml part no. 02 601 00 / 24 cans
- For larger quantities despatched by mail, shipping costs increase in accordance with the number of packages.

### Leak detector spray

spray can 125 ml

spray can 400 ml

Part no.



02 601 01

02 601 00

x x x

x x x



# Accessories



## EuroTool

for connection and disconnection of cylinder regulators to cylinder valves with only a few efforts  
new exchangeable system for an easy and safe replacement of the insert

### Advantages and equipment

- just one tool with seven different exchangeable inserts
- six inserts (orange) suitable for various European cylinder connections
- one insert (green) suitable for small cylinder sealing nut (protective cap)
- simple and safe quality exchangeable system
- toolbox with foam insert

### Technical data

- material: special polyamide with glass fibre reinforcement (developed for tools)

**EuroTool**  
in toolbox  
complete

Part no.

21 100 30



## LevelCheck

to easily check the level in gas cylinders

The practical LevelCheck shows quickly and reliably on an LED display how much gas is left in the cylinder. To do this, simply place the LevelCheck on the gas cylinder horizontally.

### Advantages and equipment

- LED display of the level: green = gas / red = no gas
- reliable measurement using ultrasound
- integrated LED torch
- suitable for all common steel and aluminium gas cylinders (Ø 200 to 350 mm)

**LevelCheck**  
complete

Part no.

50500-01

11 700 00



GOK



# Inlet connection

	Commercial name	<b>Italian connector</b>	A	<b>W 20 x 1/14 lh</b>
	Name to standard*	<b>G.1</b>	B	<b>25.0 mm</b>
	Country	<b>AT, GR, IT</b>	C	<b>16.0 mm</b>
	Gasket material	<b>NBR</b>	D	<b>10.5 mm</b>

	Commercial name	<b>Shell (wing, soft)</b>	A	<b>W 21.8 x 1/14 lh</b>
	Name to standard*	<b>G.2</b>	B	<b>wing nut</b>
	Country	<b>CH, FR</b>	C	<b>12.5 mm</b>
	Gasket material	<b>NBR</b>	D	<b>12.2 mm</b>

	Commercial name	<b>GAZ</b>	A	<b>M 16 x 1.5 rh</b>
	Name to standard*	<b>G.3</b>	B	<b>--</b>
	Country	<b>international</b>	C	<b>13.6 mm</b>
	Gasket material	<b>NBR</b>	D	<b>6.5 mm</b>

	Commercial name	<b>GF</b> Connector No. 1 (DIN 477)	A	<b>W 21.8 x 1/14 lh</b>
	Name to standard*	<b>G.4</b>	B	<b>30.0 mm</b>
	Country	<b>AT, DE, DK, FL, PL</b>	C	<b>21.0 mm</b>
	Gasket material	<b>Aluminium</b>	D	<b>11.5 mm</b>

**A** = description thread / **B** = width across flats hexagon / **C** = length coupling nut / **D** = diameter inner pin

\*description according to EN 16129 annex G and EN 15202



# Inlet connection

	Commercial name	<b>Kombi (hard)</b>	A	<b>W 21.8 x 1/14 lh</b>
	Name to standard*	<b>G.5</b>	B	<b>30.0 mm</b>
	Country	<b>AT, DE, PL</b>	C	<b>21.0 mm</b>
	Gasket material	<b>PA</b>	D	<b>7.0 mm</b>

	Commercial name	<b>British POL</b>	A	<b>G 5/8 lh</b>
	Name to standard*	<b>G.7</b>	B	<b>30.0 mm</b>
	Country	<b>GB</b>	C	<b>27.0 mm</b>
	Gasket material	<b>--</b>	D	<b>18.9 mm</b>

	Commercial name	<b>Shell (Euro) butane nut</b>	A	<b>W 21.8 x 1/14 lh</b>
	Name to standard*	<b>G.8</b>	B	<b>30.0 mm</b>
	Country	<b>GB, IE</b>	C	<b>18.0 mm</b>
	Gasket material	<b>NBR</b>	D	<b>12.2 mm</b>

	Commercial name	<b>US POL</b>	A	<b>0.880-14 NGO lh</b>
	Name to standard*	<b>G.9</b>	B	<b>24.0 mm</b>
	Country	<b>CZ, DE, NO, PL, PT, SE</b>	C	<b>28.0 mm</b>
	Gasket material	<b>--</b>	D	<b>18.9 mm</b>

**A** = description thread / **B** = width across flats hexagon / **C** = length coupling nut / **D** = diameter inner pin

\*description according to EN 16129 annex G and EN 15202

# Inlet connection

	Commercial name	<b>Soft POL</b>	A	<b>0.880-14 NGO lh</b>
	Name to standard*	<b>G.10</b>	B	<b>24.0 mm</b>
	Country	<b>NO, PT, SE</b>	C	<b>28.0 mm</b>
	Gasket material	<b>NBR</b>	D	<b>18.9 mm</b>

	Commercial name	<b>KLF</b> Connector No. 2 (DIN 477)	A	<b>W 21.8 x 1/14 lh</b>
	Name to standard*	<b>G.12</b>	B	<b>Wing nut</b>
	Country	<b>AT, DE, PL</b>	C	<b>18.0 mm</b>
	Gasket material	--	D	<b>7.0 mm</b>

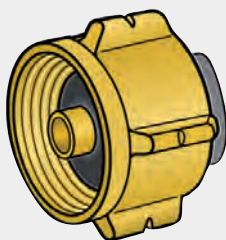
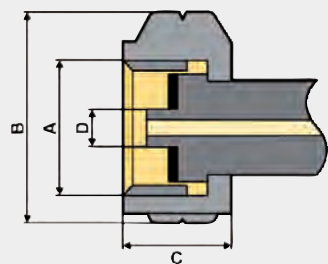
	Commercial name	<b>M 20 x 1.5</b>	A	<b>M 20 x 1.5 rh</b>
	Name to standard*	<b>G.13</b>	B	--
	Country	<b>CH, ES, FR throughout Europe for caravans</b>	C	--
			D	--

	Commercial name	<b>Compression fitting</b>	<b>Compr. fit. 8</b> <b>Compr. fit. 10</b> <b>Compr. fit. 12</b> <b>Compr. fit. 15</b> <b>Compr. fit. 18</b> <b>Compr. fit. 22</b> <b>Compr. fit. 28</b>	
	Name to standard*	<b>G.15</b> <b>G.22</b>		
	Country	<b>AT, DE</b>		
	Gasket material	--		

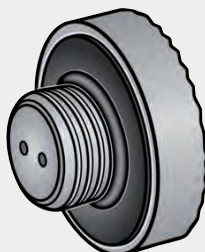
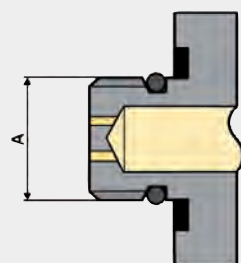
**A** = description thread / **B** = width across flats hexagon / **C** = length coupling nut / **D** = diameter inner pin

\*description according to EN 16129 annex G and EN 15202

## Inlet connection



Commercial name	<b>Kombi (soft)</b>	A	<b>W 21.8 x 1/14 lh</b>
Name to standard*	<b>G.19</b>	B	<b>wing nut</b>
Country	<b>DE</b>	C	<b>18.0 mm</b>
Gasket material	<b>NBR</b>	D	<b>7.0 mm</b>



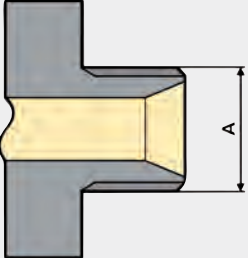

Commercial name	<b>Primus</b>	A	<b>M 14 x 1.5 rh</b>
Name to standard*	<b>G.32</b>	B	--
Country	<b>SE, NO, FI</b>	C	--
Gasket material	<b>NBR</b>	D	--

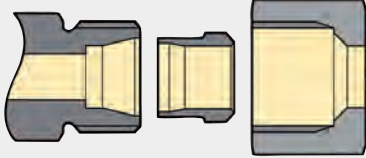
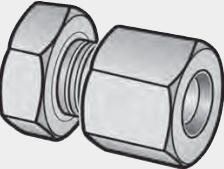
**Notes:**

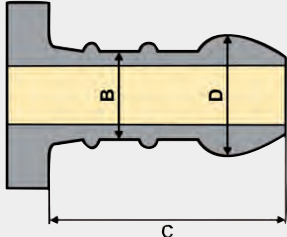
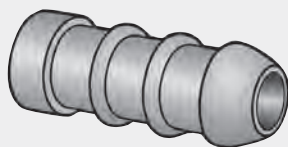
**A** = description thread / **B** = width across flats hexagon / **C** = length coupling nut / **D** = diameter inner pin

\*description according to EN 16129 annex G and EN 15202

# Outlet connections

 	Commercial name	<b>Ball-cone connector</b>	A	<b>G 1/4 lh m</b> <b>G 3/8 lh m</b> <b>G 1/2 lh m</b>
	Name to standard*	H.4, H.5, H.6		
	Country	DE, AT		

 	Commercial name	<b>Compression fitting</b>		<b>Compr. fit. 8</b> <b>Compr. fit. 10</b>
	Name to standard*	H.8		
	Country	DE, GR, IT		

 	Commercial name	<b>Hose nozzle</b> <b>D 8 x 23.5 mm</b>	A	--
	Name to standard*	H.50	B	8 mm
	Country	CH, FR, GB, PT, SE	C	max. 24 mm
			D	10 mm

Notes:

**A** = description thread / **B** = minimum diameter / **C** = length hose nozzle / **D** = maximum diameter

\*description according to EN 16129 annex G

## Article list

Part no.	Page		Part no.	Page		Part no.	Page		Part no.	Page
01 001 00	34		01 287 10	12		02 616 26	29, 54		04 221 00	24, 59
01 001 04	34		01 290 00	11		02 618 00	23		04 221 65	59
01 001 70	34		01 290 07	47		02 618 06	23, 29		04 222 00	24, 59
01 001 80	34		01 290 10	11		02 618 10	23		04 223 00	24, 59
01 004 01	48		01 290 17	47		02 700 07	51		04 224 00	24, 30, 59
01 004 02	48		01 291 00	12		02 700 08	51		04 224 65	59
01 040 00	33		01 291 10	12		02 700 10	51		04 225 00	24, 59
01 040 70	33		01 291 20	12		02 714 03	13		04 226 00	24, 59
01 041 00	33		01 291 30	12		02 714 35	13		04 227 00	24, 59
01 041 06	33		01 293 21	19		02 714 36	13		04 227 05	24, 59
01 041 15	33		01 293 22	19		02 845 00	37		04 401 00	24, 40, 58
01 041 70	33		01 294 60	12		02 845 01	37		04 401 02	24, 58
01 043 00	33		01 294 65	12		02 850 00	39		04 401 27	24, 60
01 043 03	33		01 450 00	20		02 850 01	39		04 401 30	24, 42, 60
01 044 00	35		01 523 00	34		02 850 70	39		04 401 65	41, 59
01 044 02	35		01 523 70	34		02 850 71	39		04 401 70	42, 61
01 044 70	35		02 004 62	25		02 853 00	39		04 402 00	24, 29,
01 046 00	35		02 004 63	25		02 853 09	39			40, 54, 58
01 046 03	35		02 004 64	25		02 853 70	39		04 402 30	24, 42, 60
01 046 70	35		02 004 71	51		03 202 00	63		04 402 65	41, 59
01 100 33	18		02 018 01	17, 45		03 204 00	63		04 402 70	42, 61
01 113 00	18		02 018 02	17, 45		03 230 00	63		04 403 00	40, 58
01 113 05	18		02 018 11	17, 45		03 401 00	63		04 403 30	42, 60
01 113 12	49		02 018 12	17, 45		03 402 00	63		04 403 65	41, 59
01 113 40	49		02 082 00	14, 28,		03 403 00	63		04 403 70	42, 61
01 113 41	18			57, 66		03 403 70	63		04 404 00	40, 58
01 113 42	18		02 449 00	23		03 404 00	63		04 404 30	42, 60
01 113 43	18		02 449 01	23		03 404 70	63		04 404 65	41, 59
01 113 45	49		02 449 04	23		03 410 00	63		04 404 70	42, 61
01 113 50	19		02 449 71	23		03 410 70	63		04 405 00	40, 58
01 113 61	49		02 450 25	23		03 411 00	63		04 405 01	24, 58
01 113 70	18		02 451 24	23		03 415 00	22		04 405 30	42, 60
01 113 72	18		02 452 25	23		03 420 00	22		04 405 31	24
01 114 18	49		02 481 00	20		03 500 00	22		04 405 65	41, 59
01 114 40	49		02 482 00	20		03 500 70	22		04 405 70	42, 61
01 219 02	19		02 504 00	56		03 500 99	52		04 406 00	40, 58
01 280 00	11		02 504 01	56		03 501 00	22		04 406 30	42, 60
01 280 04	47		02 504 02	56		03 501 70	22		04 406 65	41, 59
01 280 06	47		02 523 00	19-20, 57		03 501 99	52		04 406 70	42, 61
01 280 07	47		02 524 00	57		03 502 00	22		04 407 00	40, 58
01 280 09	11		02 527 00	19-20, 57		03 502 70	22		04 407 30	42, 60
01 280 10	11		02 528 00	19-20		03 502 99	52		04 407 65	41, 59
01 280 12	11		02 531 00	19-20		03 505 00	22, 52, 71		04 407 70	42, 61
01 280 14	47		02 600 32	29, 54		03 506 00	22, 52		04 408 00	40, 58
01 280 17	47		02 600 33	29, 54		03 510 00	22		04 408 30	42, 60
01 280 19	11		02 600 59	29, 54		03 511 00	22		04 408 65	41, 59
01 280 20	47		02 601 00	73		03 512 00	22		04 408 70	42, 61
01 282 01	19		02 601 01	73		03 515 00	22, 71		04 409 00	24, 58
01 285 00	11		02 611 00	29, 54		04 002 05	35, 38, 71		04 409 01	58
01 285 10	11		02 611 01	29, 54		04 046 00	57		04 409 02	58
01 285 70	11		02 611 06	29, 54		04 047 00	57		04 409 03	24, 58
01 285 72	11		02 611 10	29		04 048 00	57		04 409 04	58
01 287 00	12		02 611 40	29, 54		04 220 00	24, 59		04 409 07	24, 58

## Article list

Part no.	Page		Part no.	Page		Part no.	Page		Part no.	Page
04 409 31	24, 60		04 454 30	42, 60		07 171 00	70		08 093 00	71
04 409 33	24, 60		04 454 34	42, 60		07 172 00	70		08 094 00	71
04 409 35	60		04 454 65	41, 59		07 191 10	71		09 706 00	38
04 410 00	40, 58		04 454 70	42, 61		07 192 10	71		09 706 70	38
04 410 30	42, 60		04 455 00	40, 58		07 223 00	14, 28, 66		09 727 00	56
04 410 65	41, 59		04 455 30	42, 60		07 354 00	29, 67		09 735 00	55
04 410 70	42, 61		04 455 65	41, 59		07 355 00	29, 67		09 735 31	55
04 413 00	40, 58		04 455 70	42, 61		07 371 00	29, 67		09 735 32	55
04 413 30	42, 60		04 456 00	40, 58		07 372 00	29, 67		09 735 33	55
04 413 65	41, 59		04 456 30	42, 60		07 502 00	54, 69		09 735 34	55
04 422 00	40, 58		04 456 65	41, 59		07 503 00	69		09 735 70	55
04 422 30	42, 60		04 456 70	42, 61		07 508 00	54, 69		09 736 00	21, 36, 46
04 422 65	41, 59		04 457 00	40, 58		07 509 00	69		09 736 05	21, 36, 46
04 422 70	42, 61		04 457 01	40, 58		07 514 00	54, 69		09 736 70	21, 36
04 423 00	40, 58		04 457 30	42, 60		07 515 00	69		09 737 00	21, 36, 46
04 423 30	42, 60		04 457 65	41, 59		07 551 00	70		09 737 02	21, 36, 46
04 423 65	41, 59		04 457 70	42, 61		07 551 01	71		09 738 00	55
04 423 70	42, 61		04 458 30	42, 60		07 552 00	70		09 738 31	55
04 424 01	19		04 504 01	17, 45		07 552 01	71		09 738 32	55
04 436 00	40, 58		04 504 02	17, 45		07 599 08	69		09 738 33	55
04 436 01	40, 58		04 508 01	41, 59		07 599 10	69		09 738 34	55
04 436 02	40, 58		04 508 04	41, 59		07 599 50	69		09 738 70	55
04 436 06	40, 58		04 508 10	41, 59		07 602 00	53, 68		09 740 00	38
04 436 09	40, 58		04 585 00	16		07 608 00	53, 68		09 740 70	38
04 436 10	40, 58		04 585 01	16		07 614 00	53, 68		09 744 00	38
04 440 00	50, 62		04 586 00	16		07 681 00	53, 68		09 744 70	38
04 440 01	17, 45, 50, 62		04 586 01	16		07 702 00	26, 64		09 745 00	38
04 440 02	50, 62		04 589 00	16		07 702 70	26, 64		09 745 70	38
04 440 03	50, 62		04 590 25	5-8, 12-16		07 703 00	26, 64		10 071 22	21, 36, 46
04 440 04	50, 62		04 591 01	16		07 703 70	26, 64		10 075 00	17, 45
04 440 05	50, 62		04 660 00	60		07 708 00	26, 64		10 076 00	11, 17-18, 45, 47, 49
04 440 06	50, 62		04 661 00	60		07 708 70	26, 64		10 076 10	5-6, 12, 14, 19-20
04 440 07	50, 62		04 701 11	16		07 709 00	26, 64		10 077 10	5-6, 12, 14
04 440 08	50, 62		04 702 11	16		07 709 70	26, 64		11 445 00	20
04 440 09	50, 62		04 707 10	16		07 714 00	26, 64		11 491 00	6
04 440 10	50, 62		04 708 00	16		07 714 70	26, 64		11 491 01	6
04 440 11	50, 62		04 709 10	16		07 715 00	26, 64		11 491 02	6
04 440 14	50, 62		04 710 00	16		07 715 70	26, 64		11 491 03	6
04 440 15	50, 62		04 714 00	16		07 727 00	27, 65		11 491 04	6
04 440 16	50, 62		04 714 10	16		07 727 70	27, 65		11 491 05	6
04 440 17	50, 62		06 002 00	72		07 734 00	27, 65		11 491 06	6
04 440 18	50, 62		06 003 00	72		07 748 00	27, 65		11 492 00	15
04 440 19	50, 62		06 004 00	72		07 763 00	27, 65		11 493 01	14
04 440 21	50, 62		06 005 00	72		07 768 00	28, 66		11 493 03	14
04 440 36	50, 62		06 102 00	73		07 768 70	28, 66		11 494 01	7
04 441 00	50, 62		06 500 00	72		07 780 00	28, 66		11 494 02	7
04 441 01	50, 62		07 051 00	27, 65		07 780 70	28, 66		11 494 03	7
04 441 02	50, 62		07 108 00	70		07 794 00	27, 65		11 494 04	7
04 441 03	50, 62		07 108 05	70		07 872 00	28, 66		11 494 05	7
04 441 04	50, 62		07 109 00	70		07 873 00	28, 66		11 494 06	7
04 444 11	48, 50, 62		07 109 05	70		07 880 00	53, 68		11 495 01	7
04 454 00	40, 58		07 151 00	70		08 034 01	73			
04 454 02	40, 58		07 152 00	70		08 035 01	73			

## Article list

Part no.	Page		Part no.	Page		Part no.	Page		Part no.	Page
11 495 02	7									
11 495 03	7									
11 495 04	7									
11 495 05	7									
11 495 06	7									
11 499 00	5, 14-15									
11 499 02	5-6, 14-15									
11 499 05	5, 14-15									
11 591 00	5									
11 591 01	5									
11 591 02	5									
11 591 03	5									
11 700 00	74									
11 781 00	8, 13									
11 781 20	8, 13									
11 781 22	8, 13									
14 013 00	57									
14 013 70	57									
14 040 00	57									
14 040 70	57									
14 468 00	30									
14 509 00	5-6, 8, 12-15									
14 509 03	13, 15									
20 015 29	21, 36, 46									
20 036 30	56									
20 036 35	56									
21 100 30	74									
21 731 00	30									
21 731 05	30									
21 733 00	30									
21 733 05	30									
21 733 20	31									
21 733 30	31									
21 734 00	30									
21 734 05	30									
21 737 00	30									
21 737 05	30									
55 300 92	56									

## Short descriptions and units

Compr. fit	=	compression fitting	KLF	=	small German cylinder connector, manual tightening, W 21.8 x 1/14" lh coupling nut (connector for LPG cylinders up to 14 kg)	PS	=	maximum admitted pressure (before: PN)
De-icer	=	connection of anti-icing possible				R	=	taper male thread according to EN 10226-1
DVGW	=	German Technical and Scientific Association for Gas and Water				rh	=	right-hand thread
F	=	female thread	Komb.A	=	combined connector for large and small German cylinders, W 21.8 x 1/14" lh coupling nut	Rp	=	parallel female thread according to EN 10226-1
G	=	parallel female or male thread according to EN ISO 228-1	lh	=	left-hand thread	TRF	=	German technical regulation for LPG
GAD	=	EC Gas Appliance Directive 90/396/EC	M	=	male thread			
GAZ	=	connector for blue Campingaz® cylinders	OPSO	=	safety overpressure shut-off valve			
GF	=	large German cylinder connector, coupling nut W 21.8 x 1/14" lh (connector of 33 kg LPG cylinder)	PED	=	EC Pressure Equipment Directive 97/23/EC			
kg/h	=	nominal flow in kilogramme per hour	POL	=	POL connector of pressure regulators according to CGAV-1			
			PRV	=	safety pressure relief valve			





## Index

<b>A</b>			<b>G</b>			<b>Q</b>		
Accessories for quick-acting stop valve	63		Gas			Quick-acting		
Adapter	57		- anti-tilt device	37		- stop valve	63	
- international	56		- cylinder valve for butane cylinders	21, 36, 46		- valve	22-23	
Anti-tilt device	37		- cylinder valve for propane cylinders	21, 36, 46		Quick coupler brass	23	
<b>B</b>			- filter Truma	8, 13		<b>R</b>		
Ball valve	51		- nozzle	30		Reducer fitting		
Bending device for pipes	72		GAZ valve	21, 36, 46		- elbow	27, 65	
Blind			<b>H</b>			- straight	27, 65	
- nut	71		High pressure hose assembly			- T-shape	27, 65	
- plug for distributor valve	71		- rubber	16		Reinforcement ring	71	
- plug with coupling nut	71		- rubber with excess flow device Truma	7		<b>S</b>		
Branch			<b>I</b>			Screw connection	26-29, 53, 64-71	
- piece	38		Installation aids	69		- angled	53-54, 68-69	
- valve	38		<b>L</b>			- elbow	26, 28, 64, 66	
Brass			Leak			- reducer insert straight	28, 66	
- bulkhead compression fitting	53, 68		- detector spray	73		- straight	26-27, 29, 53-54, 64-65, 67-69	
- screw connection	53, 68		- tester	29, 54		- T-shape	26-27, 53-54, 64-65, 68-69	
Bulkhead compression fitting			- tester caravan	25		<b>Screw-in connector</b>		
- elbow	29, 53, 67-68		- tester marine	51		- elbow conical	27, 65	
- straight	29, 53, 67-68		- tester with additional volume	29		- straight conical	27, 65	
<b>C</b>			LevelCheck Truma	74		<b>Screw-on compression fitting</b>		
Caramatic® two-cylinder system	17, 45		Low pressure regulator			- elbow	28, 66	
Changeover valve	13		- camping	33-35		- straight	28, 66	
- DuoComfort Truma	15		- camping adjustable	34		Sealing screw	56	
- DuoControl CS Truma	5		- caravan	11-12, 18-19		Seamless precision steel pipe	72	
- DuoControl Truma	14		- caravan for fixed lines	20		Shut-off device	63	
Click-on adapter	56		- caravan for gas tank	19-20		Stainless steel screw connection	54, 69	
Compression fitting	26-29, 53-54, 64-71		- marine	47-49		Steel pipe	72	
Control valve 90°	38		Lubricant	69		- coated	73	
Coupling			<b>M</b>			Supply pressure controller Truma	20	
- nut	70		Manual changeover valve	13		<b>T</b>		
- nut brass	70		Medium pressure hose assembly			Test hose	23	
- nut stainless steel	70		- plastic	24, 42, 60-61		Test point	23	
- valve	22		- rubber	24, 40-41, 58-59		Truma		
Cylinder valve	21, 36, 46		- rubber corrosion-resistant	50, 62		- distributor valve	22, 52	
<b>D</b>			Medium pressure regulator Primus	19		- DuoComfort	15	
Distributor valve Truma	22, 52		Metal pipe clamp	73		- DuoControl	14	
Double branch piece	38		MonoControl CS Truma	6		- DuoControl CS	5	
DuoComfort Truma	15		<b>O</b>			- gas filter	8, 13	
DuoControl			Olive			- high pressure hose assembly rubber		
- CS Truma	5		- brass	70		with excess flow device	7	
- Truma	14		- stainless steel	71		- LevelCheck	74	
<b>E</b>			- steel	70		- MonoControl CS	6	
Elbow 90°	8		Outlet box Variant	30		- supply pressure controller	20	
Euro			<b>P</b>			Two-cylinder system Caramatic®	17, 45	
- adapter	56		Pipe	72-73		<b>V</b>		
- filling set D	55		- bending device	72		Valve	38, 63	
- set	55		- clamp metal	73		Variant outlet box	30	
EuroTool	74		- fastening	73		<b>W</b>		
Excess flow valve	39		Plug-in fitting brass	23		Water connection	30	
- low pressure	39		Pre-assembly socket	69		Water regulator	31	
<b>F</b>			Pressure test	29, 54				
Fastening clamp	63							

**Your regional GOK partner:**



**GOK**

Regler- und Armaturen-Gesellschaft mbH & Co. KG

**Obernbreiter Str. 2-16 · 97340 Marktbreit / Germany**

Telephone: +49 9332 / 404-0 · Telefax: +49 9332 / 404-49  
E-mail: [info@gok-online.de](mailto:info@gok-online.de) · Web: [www.gok-online.de](http://www.gok-online.de)

