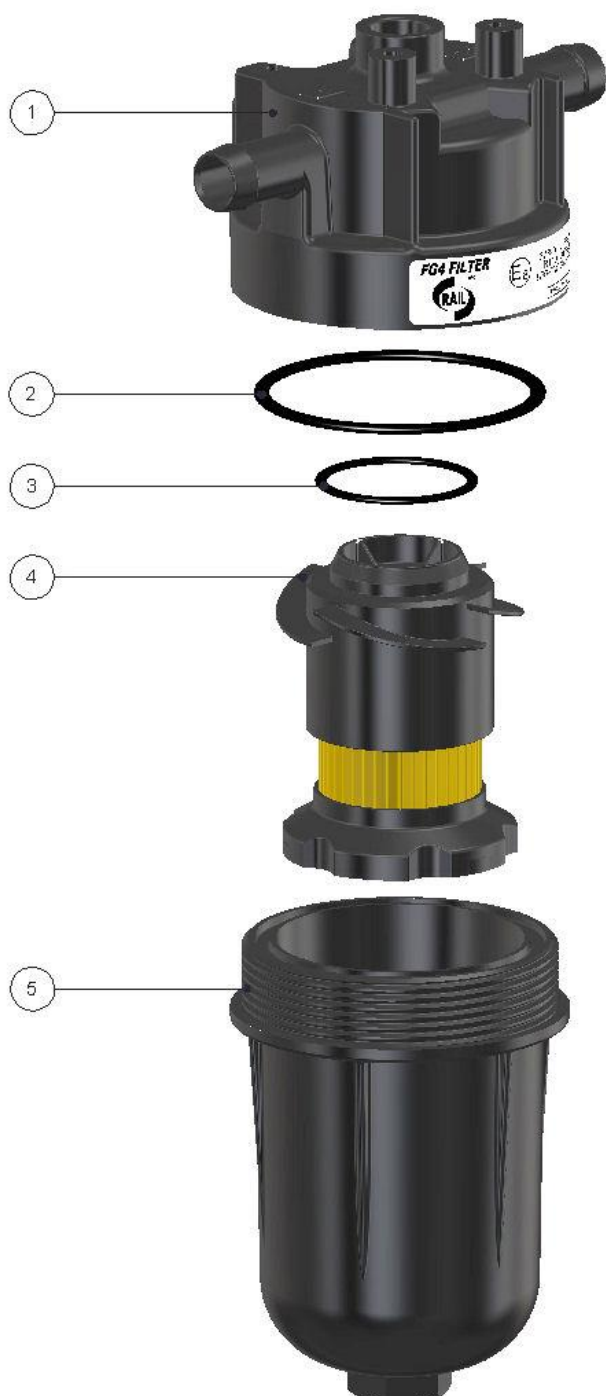




## MAINTENANCE INSTRUCTIONS FOR FG4 SEPARATE FILTER

### SEPARATE FILTER TYPE FG4

The following instructions are applicable to the FG4 separate filter.



N°	Description
1	Filter Cover
2	O-Ring Ø53.65x2.62
3	O-Ring Ø28.00x2.00
4	Filtering Cartridge
5	Filter Chamber

## Maintenance instructions

1. Ensure that the main system solenoid valve is closed, allowing no LPG flow.
2. Remove filter from system.
3. Unscrew the Filter Chamber (5) with a 18mm hexagonal wrench and inspect the interior.



4. Take out O-ring Ø53.65x2.62 (2) and Filtering Cartridge (4) with O-ring Ø28.00x2.00 (3). Only if necessary take out O-ring Ø53.65x2.65 (2).

5. Clean Filtering Cartridge only with compressed air, not with any liquid. If necessary replace it.

6. Clean interior of Filter Cover (1) and interior of Filter Chamber (5) only with compressed air, petrol or kerosene.



7. If necessary replace O-ring Ø53.65x2.62 (2) and O-ring Ø28.00x2.00 (3).
8. Install all O-rings correctly and lubricate adequately. This operation request extreme cleanliness.
9. Then refit the entire assembly, tightening to the torque specified for the Filter Chamber with a 18mm hexagonal wrench.



**All replaceable parts are contained in special replace KIT available on request**

All internal parts of the Filter, **if not replaced**, need to be cleaned using only compressed air, petrol or kerosene. The Filtering cartridge need to be cleaned only using compressed air, cause not impregnate the filtering material. **Do not use water, alcohol or other solvents.**

When assembling, FOLLOW THE TIGHTENING TORQUES SPECIFIED.

### TIGHTENING TORQUE

For correct Filter assembly, the tightening torque specified here must be used:  
No. 18mm hexagonal wrench – **from 12 to 14 Nm**